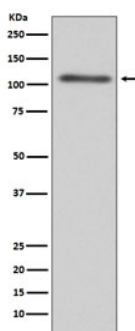


C3 Antibody / Complement C3 [clone AOHE-3] (RQ4854)

Catalog No.	Formulation	Size
RQ4854	Antibody in PBS with 0.02% sodium azide, 50% glycerol and 0.4-0.5mg/ml BSA	100 ul

[Bulk quote request](#)

Availability	1-2 weeks
Species Reactivity	Human
Format	Purified
Clonality	Rabbit Monoclonal
Isotype	Rabbit IgG
Clone Name	AOHE-3
Purity	Affinity purified
UniProt	P01024
Applications	Western blot : 1:500-1:2000
Limitations	This C3 antibody is available for research use only.



Western blot testing of human HepG2 cell lysate with C3 antibody. Expected molecular weight: ~185 kDa (alpha + beta chain), ~110 kDa (alpha chain), ~70 kDa (beta chain).

Description

C3 plays a central role in the activation of the complement system. Its processing by C3 convertase is the central reaction in both classical and alternative complement pathways. After activation C3b can bind covalently, via its reactive thioester, to cell surface carbohydrates or immune aggregates. [UniProt]

Application Notes

Optimal dilution of the C3 antibody should be determined by the researcher.

Immunogen

A synthetic peptide specific to human Complement C3 was used as the immunogen for the C3 antibody.

Storage

Store the C3 antibody at -20oC.