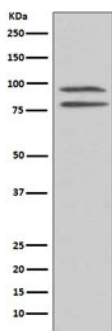


## Phospho-MSK1 Antibody (pS376) [clone FCF-18] (RQ4786)

Catalog No.	Formulation	Size
RQ4786	Antibody in PBS with 0.02% sodium azide, 50% glycerol and 0.4-0.5mg/ml BSA	100 ul

[Bulk quote request](#)

Availability	1-2 weeks
Species Reactivity	Human
Format	Purified
Clonality	Rabbit Monoclonal
Isotype	Rabbit IgG
Clone Name	FCF-18
Purity	Affinity purified
UniProt	O75582
Localization	Nuclear + cytoplasmic
Applications	Western blot : 1:500-1:2000
Limitations	This phospho-MSK1 antibody is available for research use only.



Western blot testing of lysate from human HEK293 cells, treated with EGF, with phospho-MSK1 antibody. Predicted molecular weight ~90 kDa.

## Description

'Mitogen and stress activated protein kinase 1,' also called RPS6KA5, is a serine/threonine-protein kinase that is required for the mitogen or stress-induced phosphorylation of the transcription factors CREB1 and ATF1 and for the regulation of the transcription factors RELA, STAT3 and ETV1/ER81, and that contributes to gene activation by histone phosphorylation and

functions in the regulation of inflammatory genes. Phosphorylates CREB1 and ATF1 in response to mitogenic or stress stimuli such as UV-C irradiation, epidermal growth factor (EGF) and anisomycin. [UniProt]

## Application Notes

Optimal dilution of the phospho-MSK1 antibody should be determined by the researcher.

## Immunogen

A synthetic peptide specific to human MSK1 / RPS6KA5 (surrounding pS376) was used as the immunogen for the phospho-MSK1 antibody.

## Storage

Store the phospho-MSK1 antibody at -20oC.