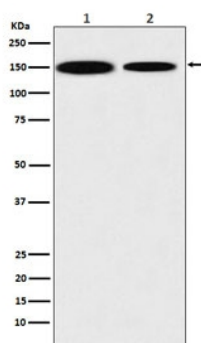


## KDM4A Antibody / JMJD2A / JHDM3A [clone AEHB-11] (RQ4772)

Catalog No.	Formulation	Size
RQ4772	Antibody in PBS with 0.02% sodium azide, 50% glycerol and 0.4-0.5mg/ml BSA	100 ul

[Bulk quote request](#)

<b>Availability</b>	1-2 weeks
<b>Species Reactivity</b>	Human
<b>Format</b>	Purified
<b>Clonality</b>	Rabbit Monoclonal
<b>Isotype</b>	Rabbit IgG
<b>Clone Name</b>	AEHB-11
<b>Purity</b>	Affinity purified
<b>UniProt</b>	O75164
<b>Applications</b>	Western blot : 1:500-1:2000
<b>Limitations</b>	This KDM4A antibody is available for research use only.



Western blot testing of 1) human HEK293 and 2) mouse NIH3T3 lysate with KDM4A antibody. Predicted molecular weight ~121 kDa.

### Description

'Lysine (K) specific demethylase 4A' (KDM4A) is a histone demethylase that specifically demethylates 'Lys-9' and 'Lys-36' residues of histone H3, thereby playing a central role in histone code. Does not demethylate histone H3 'Lys-4', H3 'Lys-27' nor H4 'Lys-20'. Demethylates trimethylated H3 'Lys-9' and H3 'Lys-36' residue, while it has no activity on mono- and dimethylated residues.

## Application Notes

Optimal dilution of the KDM4A antibody should be determined by the researcher.

## Immunogen

A synthetic peptide specific to human KDM4A was used as the immunogen for the KDM4A antibody.

## Storage

Store the KDM4A antibody at -20oC.