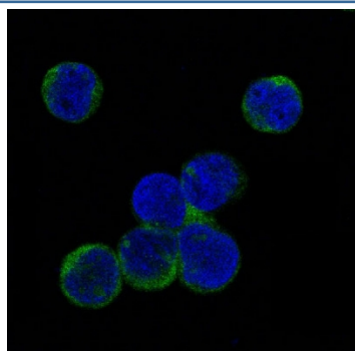


Phospho-JAK2 Antibody (pY1007/pY1008) [clone IFE-10] (RQ4763)

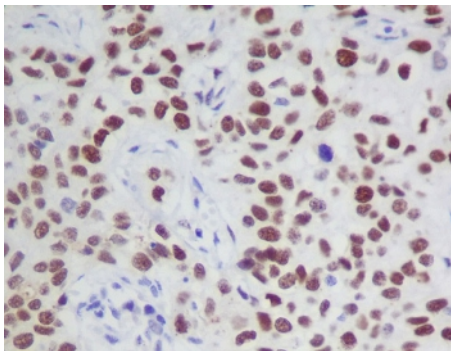
Catalog No.	Formulation	Size
RQ4763	Antibody in PBS with 0.02% sodium azide, 50% glycerol and 0.4-0.5mg/ml BSA	100 ul

[Bulk quote request](#)

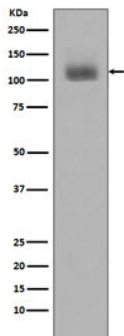
Availability	1-2 weeks
Species Reactivity	Human, Mouse, Rat
Format	Purified
Clonality	Rabbit Monoclonal
Isotype	Rabbit IgG
Clone Name	IFE-10
Purity	Affinity purified
UniProt	O60674
Localization	Nuclear, cytoplasmic
Applications	Western blot : 1:500-1:2000 Immunohistochemistry (FFPE) : 1:50-1:200 Immunofluorescence/Immunocytochemistry : 1:50-1:200
Limitations	This phospho-JAK2 antibody is available for research use only.



IF/ICC testing of pervanadate-treated human Jurkat cells with phospho-JAK2 antibody.



IHC staining of FFPE human tissue with phospho-JAK2 antibody. HIER: boil tissue sections in pH6, 10mM citrate buffer, for 10-20 min and allow to cool before testing.



Western blot testing with phospho-JAK2 antibody. Predicted molecular weight ~130 kDa.

Description

Janus kinase 2 is a human protein that has been implicated in signaling by members of the type II cytokine receptor family, the GM-CSF receptor family, the gp130 receptor family, and the single chain receptors.

Application Notes

Optimal dilution of the phospho-JAK2 antibody should be determined by the researcher.

Immunogen

A synthetic peptide specific to human JAK2 (surrounding pY1007/pY1008) was used as the immunogen for the phospho-JAK2 antibody.

Storage

Store the phospho-JAK2 antibody at -20oC.