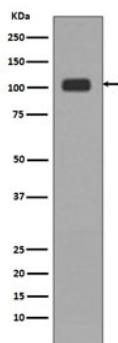


## KDM1 / LSD1 Antibody [clone DID-11] (RQ4754)

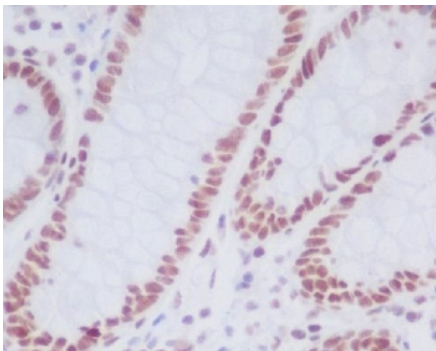
Catalog No.	Formulation	Size
RQ4754	Antibody in PBS with 0.02% sodium azide, 50% glycerol and 0.4-0.5mg/ml BSA	100 ul

[Bulk quote request](#)

Availability	1-2 weeks
Species Reactivity	Human
Format	Purified
Clonality	Rabbit Monoclonal
Isotype	Rabbit IgG
Clone Name	DID-11
Purity	Affinity purified
UniProt	O60341
Localization	Nuclear
Applications	Western blot : 1:1000-1:2000 Immunohistochemistry (FFPE) : 1:50-1:200
Limitations	This KDM1 / LSD1 antibody is available for research use only.



Western blot testing of human HeLa lysate with KDM1 / LSD1 antibody. Predicted molecular weight ~110 kDa.



IHC staining of FFPE human colon tissue with KDM1 / LSD1 antibody. HIER: boil tissue sections in pH6, 10mM citrate buffer, for 10-20 min and allow to cool before testing.

## Description

Histone demethylase that demethylates both 'Lys-4' (H3K4me) and 'Lys-9' (H3K9me) of histone H3, thereby acting as a coactivator or a corepressor, depending on the context. [UniProt]

## Application Notes

Optimal dilution of the KDM1 / LSD1 antibody should be determined by the researcher.

## Immunogen

A synthetic peptide specific to human Lysine-specific histone demethylase 1A was used as the immunogen for the KDM1 / LSD1 antibody.

## Storage

Store the KDM1 / LSD1 antibody at -20oC.