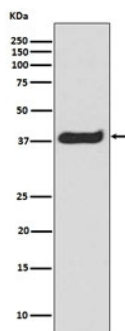


Phospho-LAT Antibody [clone AOH-12] (RQ4743)

| Catalog No. | Formulation | Size |
|-------------|--|--------|
| RQ4743 | Antibody in PBS with 0.02% sodium azide, 50% glycerol and 0.4-0.5mg/ml BSA | 100 ul |

[Bulk quote request](#)

| | |
|---------------------------|---|
| Availability | 1-2 weeks |
| Species Reactivity | Human |
| Format | Purified |
| Clonality | Rabbit Monoclonal |
| Isotype | Rabbit IgG |
| Clone Name | AOH-12 |
| Purity | Affinity purified |
| UniProt | O43561 |
| Applications | Western blot : 1:500-1:2000 |
| Limitations | This phospho-LAT antibody is available for research use only. |



Western blot testing of human Jurkat lysate with phospho-LAT antibody. Expected molecular weight: 36-38 kDa.

Description

Linker for activation of T-cells family member 1 (LAT) is required for TCR (T-cell antigen receptor)- and pre-TCR-mediated signaling, both in mature T-cells and during their development. [UniProt]

Application Notes

Optimal dilution of the phospho-LAT antibody should be determined by the researcher.

Immunogen

A synthetic peptide specific to human LAT (surrounding pY191) was used as the immunogen for the phospho-LAT antibody.

Storage

Store the phospho-LAT antibody at -20oC.