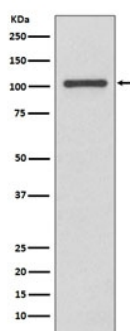


## INPP4B Antibody [clone GDO-9] (RQ4725)

Catalog No.	Formulation	Size
RQ4725	Antibody in PBS with 0.02% sodium azide, 50% glycerol and 0.4-0.5mg/ml BSA	100 ul

[Bulk quote request](#)

Availability	1-2 weeks
Species Reactivity	Human
Format	Purified
Clonality	Rabbit Monoclonal
Isotype	Rabbit IgG
Clone Name	GDO-9
Purity	Affinity purified
UniProt	O15327
Applications	Western blot : 1:1000-1:2000
Limitations	This INPP4B antibody is available for research use only.



Western blot testing of human MCF7 cell lysate with INPP4B antibody. Predicted molecular weight ~105 kDa.

## Description

The INPP4B gene encodes the inositol polyphosphate 4-phosphatase type II, one of the enzymes involved in phosphatidylinositol signaling pathways. This enzyme removes the phosphate group at position 4 of the inositol ring from inositol 3,4-bisphosphate. [RefSeq]

## Application Notes

Optimal dilution of the INPP4B antibody should be determined by the researcher.

## Immunogen

A synthetic peptide specific to human INPP4B / Type II inositol 3,4-bisphosphate 4-phosphatase was used as the immunogen for the INPP4B antibody.

## Storage

Store the INPP4B antibody at -20oC.