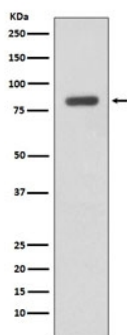


## IKK beta Antibody / IKBKB [clone FOI-9] (RQ4716)

Catalog No.	Formulation	Size
RQ4716	Antibody in PBS with 0.02% sodium azide, 50% glycerol and 0.4-0.5mg/ml BSA	100 ul

[Bulk quote request](#)

Availability	1-2 weeks
Species Reactivity	Human
Format	Purified
Clonality	Rabbit Monoclonal
Isotype	Rabbit IgG
Clone Name	FOI-9
Purity	Affinity purified
UniProt	O14920
Applications	Western blot : 1:500-1:2000
Limitations	This IKK beta antibody is available for research use only.



Western blot testing of human Daudi cell lysate with IKK beta antibody. Predicted molecular weight ~87 kDa.

## Description

Serine kinase that plays an essential role in the NF-kappa-B signaling pathway which is activated by multiple stimuli such as inflammatory cytokines, bacterial or viral products, DNA damages or other cellular stresses. Acts as part of the canonical IKK complex in the conventional pathway of NF-kappa-B activation and phosphorylates inhibitors of NF-kappa-B on 2 critical serine residues. [UniProt]

## Application Notes

Optimal dilution of the IKK beta antibody should be determined by the researcher.

## Immunogen

A synthetic peptide specific to human IKK beta / IKBKB was used as the immunogen for the IKK beta antibody.

## Storage

Store the IKK beta antibody at -20oC.