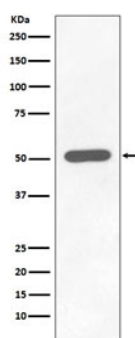


Phospho-Chk1 Antibody (pS296) [clone FEO-3] (RQ4710)

Catalog No.	Formulation	Size
RQ4710	Antibody in PBS with 0.02% sodium azide, 50% glycerol and 0.4-0.5mg/ml BSA	100 ul

[Bulk quote request](#)

Availability	1-2 weeks
Species Reactivity	Human
Format	Purified
Clonality	Rabbit Monoclonal
Isotype	Rabbit IgG
Clone Name	FEO-3
Purity	Affinity purified
UniProt	O14757
Applications	Western blot : 1:500-1:2000
Limitations	This phospho-Chk1 antibody (pS296) is available for research use only.



Western blot testing of lysate from human HEK293 cells treated with Calyculin with phospho-Chk1 antibody (pS296). Predicted molecular weight ~54 kDa.

Description

The protein encoded by CHEK1 belongs to the Ser/Thr protein kinase family. It is required for checkpoint mediated cell cycle arrest in response to DNA damage or the presence of unreplicated DNA. This protein acts to integrate signals from ATM and ATR, two cell cycle proteins involved in DNA damage responses, that also associate with chromatin in meiotic prophase I. Phosphorylation of CDC25A protein phosphatase by this protein is required for cells to delay cell cycle progression in

response to double-strand DNA breaks. [RefSeq]

Application Notes

Optimal dilution of the phospho-Chk1 antibody (pS296) should be determined by the researcher.

Immunogen

A synthetic peptide human Chk1 / CHEK1 (surrounding pS296) was used as the immunogen for the phospho-Chk1 antibody (pS296).

Storage

Store the phospho-Chk1 antibody (pS296) at -20oC.