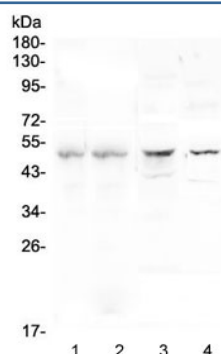


Properdin Antibody / Complement Factor P / CFP (RQ4672)

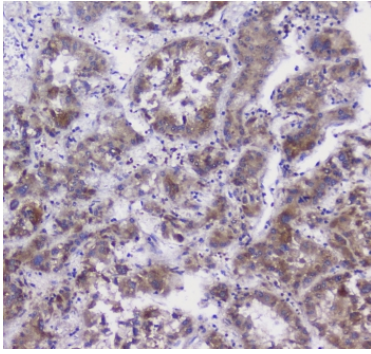
Catalog No.	Formulation	Size
RQ4672	0.5mg/ml if reconstituted with 0.2ml sterile DI water	100 ug

Bulk quote request

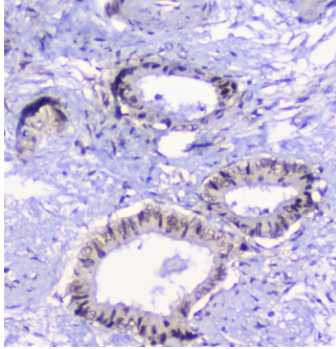
Availability	1-3 business days
Species Reactivity	Human, Mouse, Rat
Format	Antigen affinity purified
Clonality	Polyclonal (rabbit origin)
Isotype	Rabbit IgG
Purity	Antigen affinity purified
Buffer	Lyophilized from 1X PBS with 2% Trehalose and 0.025% sodium azide
UniProt	P27918
Localization	Secreted
Applications	Western blot : 0.5-1ug/ml IHC (FFPE) : 1-2ug/ml
Limitations	This Properdin antibody is available for research use only.



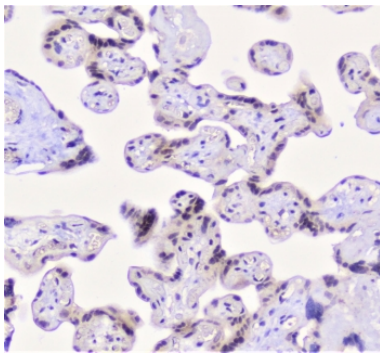
Western blot testing of 1) human placenta, 2) human U937, 3) rat brain and 4) mouse brain lysate with Properdin antibody at 0.5ug/ml. Predicted molecular weight ~51 kDa.



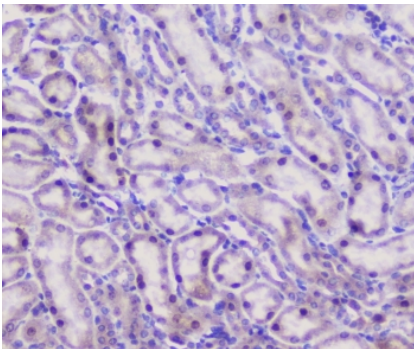
IHC staining of FFPE human liver cancer with Properdin antibody at 1ug/ml. HIER: boil tissue sections in pH6, 10mM citrate buffer, for 10-20 min followed by cooling at RT for 20 min.



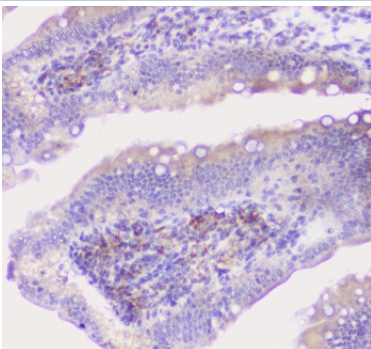
IHC staining of FFPE human cholangiocarcinoma with Properdin antibody at 1ug/ml. HIER: boil tissue sections in pH6, 10mM citrate buffer, for 10-20 min followed by cooling at RT for 20 min.



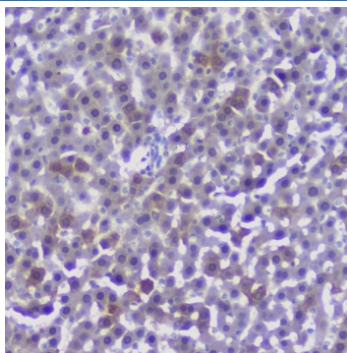
IHC staining of FFPE human placenta with Properdin antibody at 1ug/ml. HIER: boil tissue sections in pH6, 10mM citrate buffer, for 10-20 min followed by cooling at RT for 20 min.



IHC staining of FFPE mouse kidney with Properdin antibody at 1ug/ml. HIER: boil tissue sections in pH6, 10mM citrate buffer, for 10-20 min followed by cooling at RT for 20 min.



IHC staining of FFPE rat intestine with Properdin antibody at 1ug/ml. HIER: boil tissue sections in pH6, 10mM citrate buffer, for 10-20 min followed by cooling at RT for 20 min.



IHC staining of FFPE rat liver with Properdin antibody at 1ug/ml. HIER: boil tissue sections in pH6, 10mM citrate buffer, for 10-20 min followed by cooling at RT for 20 min.

Description

Properdin (factor P) is a plasma protein that is active in the alternative complement pathway of the innate immune system. It is mapped to Xp11.23. This protein binds to many microbial surfaces and apoptotic cells and stabilizes the C3- and C5-convertase enzyme complexes in a feedback loop that ultimately leads to formation of the membrane attack complex and lysis of the target cell. Mutations in this gene result in two forms of properdin deficiency, which results in high susceptibility to meningococcal infections. Multiple alternatively spliced variants, encoding the same protein, have been identified.

Application Notes

Optimal dilution of the Properdin antibody should be determined by the researcher.

Immunogen

Amino acids MVEGQGGEKNVTFWGRPLPRCEELQGQKLVVEEKR were used as the immunogen for the Properdin antibody.

Storage

After reconstitution, the Properdin antibody can be stored for up to one month at 4oC. For long-term, aliquot and store at -20oC. Avoid repeated freezing and thawing.