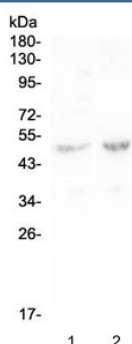


PLA2G7 Antibody / Lp-PLA2 / PAFAH (RQ4597)

Catalog No.	Formulation	Size
RQ4597	0.5mg/ml if reconstituted with 0.2ml sterile DI water	100 ug

[Bulk quote request](#)

Availability	1-3 business days
Species Reactivity	Human
Format	Antigen affinity purified
Clonality	Polyclonal (rabbit origin)
Isotype	Rabbit IgG
Purity	Antigen affinity purified
Buffer	Lyophilized from 1X PBS with 2% Trehalose and 0.025% sodium azide
UniProt	Q13093
Applications	Western blot : 0.5-1ug/ml ELISA (Capture) : 1-5ug/ml (human recombinant protein)
Limitations	This PLA2G7 antibody is available for research use only.



Western blot testing of human 1) Caco-2 and 2) SW620 lysate with PLA2G7 antibody at 0.5ug/ml. Expected molecular weight: 45-67 kDa depending on glycosylation level.

Description

Lipoprotein-associated phospholipase A2 (Lp-PLA2), also known as platelet-activating factor acetylhydrolase (PAF-AH), is a phospholipase A2 enzyme that in humans is encoded by the PLA2G7 gene. Lp-PLA2 is a 45-50 kDa protein of 441 amino acids. It is one of several PAF acetylhydrolases. In the blood it travels mainly with low-density lipoprotein (LDL). Less than

20% is associated with high-density lipoprotein HDL. It is an enzyme produced by inflammatory cells and hydrolyzes oxidized phospholipids in LDL. Lp-PLA2 is platelet-activating factor (PAF) acetylhydrolase, a secreted enzyme that catalyzes the degradation of PAF to inactive products by hydrolysis of the acetyl group at the sn-2 position, producing the biologically inactive products LYSO-PAF and acetate.

Application Notes

Optimal dilution of the PLA2G7 antibody should be determined by the researcher.

Immunogen

Amino acids A176-N415 from the human protein were used as the immunogen for the PLA2G7 antibody.

Storage

After reconstitution, the PLA2G7 antibody can be stored for up to one month at 4oC. For long-term, aliquot and store at -20oC. Avoid repeated freezing and thawing.