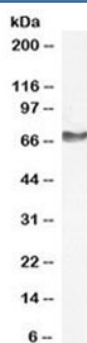


## NEFL Antibody (Neurofilament light chain) (R36472)

Catalog No.	Formulation	Size
R36472-100UG	0.5 mg/ml in 1X TBS, pH7.3, with 0.5% BSA (US sourced) and 0.02% sodium azide	100 ug

[Bulk quote request](#)

Availability	1-3 business days
Species Reactivity	Human, Mouse, Rat, Dog, Cow, Pig
Format	Antigen affinity purified
Clonality	Polyclonal (goat origin)
Isotype	Goat Ig
Purity	Antigen affinity
UniProt	P07196
Applications	Western blot : 0.5-2ug/ml ELISA (peptide) LOD : 1:4000
Limitations	This NEFL antibody is available for research use only.



Western blot testing of human KELLY cell lysate (neuroblastoma line) with NEFL antibody at 1ug/ml. Predicted molecular weight: 62-68 kDa.

## Description

Neurofilaments (NF) are the 10 nanometer or intermediate filaments found in neurons. They are a major component of the neuronal cytoskeleton, and are believed to function primarily to provide structural support for the axon and to regulate axon diameter. [Wiki]

## Application Notes

Optimal dilution of the NEFL antibody should be determined by the researcher.

## Immunogen

Amino acids EKQLQELEDKQNAD were used as the immunogen for this NEFL antibody.

## Storage

Aliquot and store the NEFL antibody at -20oC.