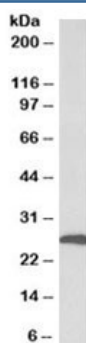


CFD Antibody (R36421)

Catalog No.	Formulation	Size
R36421-100UG	0.5 mg/ml in 1X TBS, pH7.3, with 0.5% BSA (US sourced) and 0.02% sodium azide	100 ug

[Bulk quote request](#)

Availability	1-3 business days
Species Reactivity	Human
Format	Antigen affinity purified
Clonality	Polyclonal (goat origin)
Isotype	Goat Ig
Purity	Antigen affinity
Gene ID	1675
Applications	Western blot : 1-3ug/ml ELISA (peptide) LOD : 1:32000
Limitations	This CFD antibody is available for research use only.



Western blot testing of human adipose tissue lysate with CFD antibody at 1ug/ml. Predicted molecular weight: ~27kDa.

Description

Additional name(s) for this target protein: Complement Factor D; ADIPSIN; ADN

Application Notes

Optimal dilution of the CFD antibody should be determined by the researcher.

Immunogen

Amino acids NRRTHHDGAITER were used as the immunogen for this CFD antibody.

Storage

Aliquot and store the CFD antibody at -20oC.