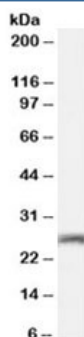


Connexin 26 Antibody (R36384)

Catalog No.	Formulation	Size
R36384-100UG	0.5 mg/ml in 1X TBS, pH7.3, with 0.5% BSA (US sourced) and 0.02% sodium azide	100 ug

[Bulk quote request](#)

Availability	1-3 business days
Species Reactivity	Human, Mouse
Predicted Reactivity	Rat
Format	Antigen affinity purified
Clonality	Polyclonal (goat origin)
Isotype	Goat Ig
Purity	Antigen affinity
Gene ID	2706
Applications	Western blot : 0.01-0.03ug/ml ELISA (peptide) LOD : 1:128000
Limitations	This Connexin 26 antibody is available for research use only.



Western blot testing of mouse brain lysate with Connexin 26 antibody at 0.01ug/ml.
Predicted molecular weight: ~26kDa.

Description

Additional name(s) for this target protein: Gap junction protein beta 2; GJB2

Application Notes

Optimal dilution of the Connexin 26 antibody should be determined by the researcher.

Immunogen

Amino acids YLLIRYCSGKSKKP were used as the immunogen for this Connexin 26 antibody.

Storage

Aliquot and store the Connexin 26 antibody at -20oC.