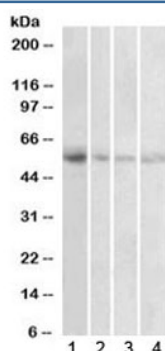


## VMAT2 Antibody / SLC18A2 (R36117)

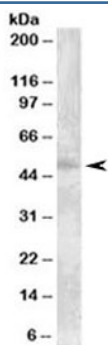
Catalog No.	Formulation	Size
R36117-100UG	0.5 mg/ml in 1X TBS, pH7.3, with 0.5% BSA (US sourced) and 0.02% sodium azide	100 ug

[Bulk quote request](#)

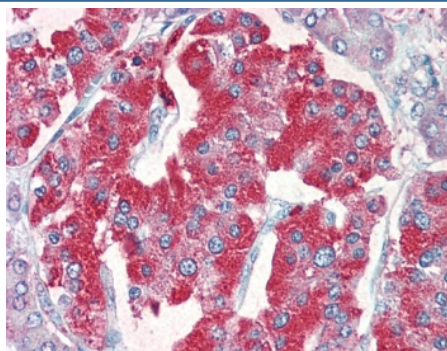
Availability	1-3 business days
Species Reactivity	Human
Predicted Reactivity	Mouse, Rat
Format	Antigen affinity purified
Clonality	Polyclonal (goat origin)
Isotype	Goat Ig
Purity	Antigen affinity
Gene ID	6571
Localization	Cytoplasmic
Applications	Western blot : 1-3 ug/ml IHC (FFPE) : 2.5-5ug/ml ELISA (peptide) LOD : 1:8000
Limitations	This VMAT2 antibody is available for research use only.



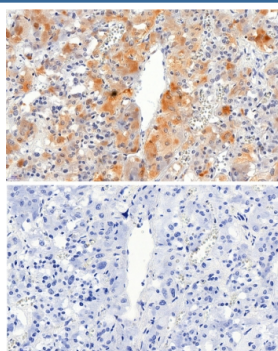
Western blot testing of human 1) placenta, 2) uterus, 3) adrenal gland and 4) pancreas lysate with VMAT2 antibody at 1ug/ml. Predicted molecular weight: ~55 kDa.



Western blot testing of human placenta lysate with VMAT2 antibody at 0.3ug/ml. Predicted molecular weight: ~55 kDa.



IHC testing of FFPE human pancreas tissue with VMAT2 antibody at 5ug/ml. Required HIER: steamed antigen retrieval with pH6 citrate buffer; AP-staining.



IHC testing of FFPE human adrenal gland tissue with VMAT2 antibody at 2.5ug/ml. Required HIER: steamed antigen retrieval with pH6 citrate buffer; HRP-staining.

## Description

Additional name(s) for this target protein: Vesicular monoamine transporter 2; solute carrier family 18 (vesicular monoamine) member 2 (SLC18A2)

## Application Notes

Optimal dilution of the VMAT2 antibody should be determined by the researcher.

## Immunogen

Amino acids SYPIGEDEEESD were used as the immunogen for this VMAT2 antibody.

## Storage

Aliquot and store the VMAT2 antibody at -20oC.

