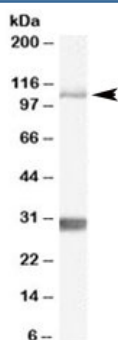


## Insulin degrading enzyme Antibody (R35418)

Catalog No.	Formulation	Size
R35418-100UG	0.5 mg/ml in 1X TBS, pH7.3, with 0.5% BSA (US sourced) and 0.02% sodium azide	100 ug

[Bulk quote request](#)

Availability	1-3 business days
Species Reactivity	Mouse, Rat
Format	Antigen affinity purified
Clonality	Polyclonal (goat origin)
Isotype	Goat Ig
Purity	Antigen affinity
Gene ID	15925
Applications	Western blot : 1-3ug/ml ELISA (peptide) LOD : 1:16000
Limitations	This Insulin degrading enzyme antibody is available for research use only.



Western blot testing of mouse brain lysate with Insulin degrading enzyme antibody at 1ug/ml. The expected ~118kDa band and the additional ~30kDa band are both blocked by immunizing peptide.

## Description

Additional name(s) for this target protein: Ide, Insulysin, Insulinase

## Application Notes

Optimal dilution of the Insulin degrading enzyme antibody should be determined by the researcher.

## **Immunogen**

Amino acids QQYNYDRDNIE were used as the immunogen for this Insulin degrading enzyme antibody.

## **Storage**

Aliquot and store the Insulin degrading enzyme antibody at -20oC.