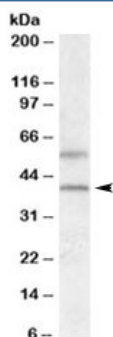


GPR81 Antibody (R35411)

Catalog No.	Formulation	Size
R35411-100UG	0.5 mg/ml in 1X TBS, pH7.3, with 0.5% BSA (US sourced) and 0.02% sodium azide	100 ug

[Bulk quote request](#)

Availability	1-3 business days
Species Reactivity	Human
Predicted Reactivity	Dog, Pig
Format	Antigen affinity purified
Clonality	Polyclonal (goat origin)
Isotype	Goat Ig
Purity	Antigen affinity
Gene ID	27198
Applications	Western blot : 0.3-1ug/ml ELISA (peptide) LOD : 1:8000
Limitations	This GPR81 antibody is available for research use only.



Western blot testing of human liver lysate with GPR81 antibody at 0.5g/ml. The expected ~40kDa band and the additional ~55kDa band are both blocked by addition of the immunizing peptide.

Description

Additional name(s) for this target protein: G protein-coupled receptor 81

Application Notes

Optimal dilution of the GPR81 antibody should be determined by the researcher.

Immunogen

Amino acids QQLARQARMKKATR were used as the immunogen for this GPR81 antibody.

Storage

Aliquot and store the GPR81 antibody at -20oC.