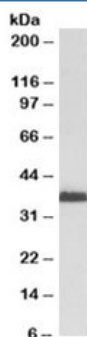


## MSI2 Antibody (R35285)

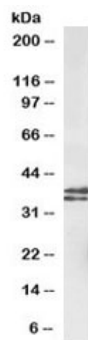
Catalog No.	Formulation	Size
R35285-100UG	0.5 mg/ml in 1X TBS, pH7.3, with 0.5% BSA (US sourced) and 0.02% sodium azide	100 ug

[Bulk quote request](#)

Availability	1-3 business days
Species Reactivity	Human, Mouse
Predicted Reactivity	Dog
Format	Antigen affinity purified
Clonality	Polyclonal (goat origin)
Isotype	Goat Ig
Purity	Antigen affinity
Gene ID	124540
Applications	Western blot : 1-3ug/ml ELISA (peptide) LOD : 1:128000
Limitations	This MSI2 antibody is available for research use only.



Western blot testing of KELLY cell lysate with MSI2 antibody at 2ug/ml. Predicted molecular weight: ~35kDa.



Western blot testing of mouse fetal brain lysate with MSI2 antibody at 1ug/ml. Predicted molecular weight: ~35kDa.

## Description

Additional name(s) for this target protein: Musashi-2; Musashi RNA-binding protein 2

## Immunogen

Amino acids QGTSGSANDSQHD were used as the immunogen for this MSI2 antibody.

## Storage

Aliquot and store the MSI2 antibody at -20oC.