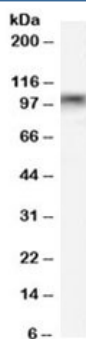


MYBL2 Antibody (R35242)

Catalog No.	Formulation	Size
R35242-100UG	0.5 mg/ml in 1X TBS, pH7.3, with 0.5% BSA (US sourced) and 0.02% sodium azide	100 ug

[Bulk quote request](#)

Availability	1-3 business days
Species Reactivity	Human, Mouse, Rat
Predicted Reactivity	Cow, Dog, Pig
Format	Antigen affinity purified
Clonality	Polyclonal (goat origin)
Isotype	Goat Ig
Purity	Antigen affinity
Gene ID	4605
Applications	Western blot : 0.1-0.3ug/ml ELISA (peptide) LOD : 1:32000
Limitations	This MYBL2 antibody is available for research use only.



Western blot testing of rat stomach lysate with MYBL2 antibody at 0.1ug/ml. Predicted molecular weight: ~79 kDa, may also be observed at 100~110 kDa.

Description

Additional name(s) for this target protein: MYB-related protein B, BMYB, B-Myb

Application Notes

Optimal dilution of the MYBL2 antibody should be determined by the researcher.

Immunogen

Amino acids QEKARQLLGRLKPSH were used as the immunogen for this MYBL2 antibody.

Storage

Aliquot and store the MYBL2 antibody at -20oC.