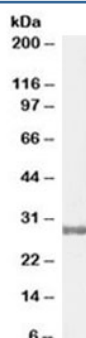


## COMT Antibody (R35218)

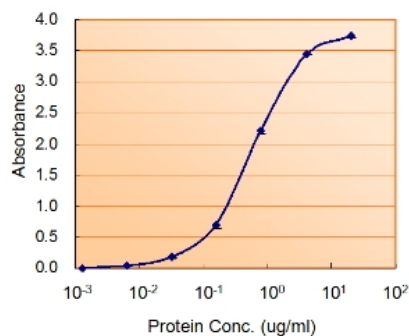
Catalog No.	Formulation	Size
R35218-100UG	0.5 mg/ml in 1X TBS, pH7.3, with 0.5% BSA (US sourced) and 0.02% sodium azide	100 ug

[Bulk quote request](#)

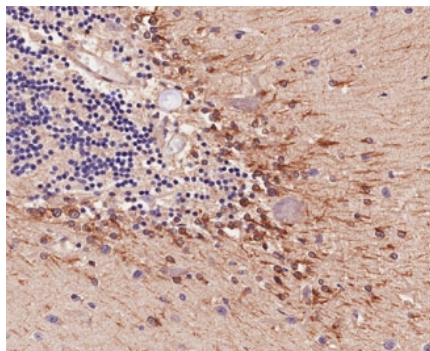
Availability	1-3 business days
Species Reactivity	Human
Format	Antigen affinity purified
Clonality	Polyclonal (goat origin)
Isotype	Goat Ig
Purity	Antigen affinity
Gene ID	1312
Localization	Cytoplasmic, membranous
Applications	Western blot : 0.3-1ug/ml IHC (FFPE) : 2-4ug/ml Enzyme ImmunoAssay : binds recombinant protein (use at 0.5-2ug/ml) ELISA (peptide) LOD : 1:64000
Limitations	This COMT antibody is available for research use only.



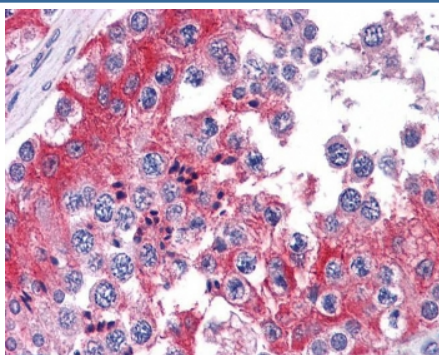
Western blot testing of human testis lysate with COMT antibody at 0.3ug/ml. Predicted molecular weight: ~30/25 kDa (isoforms 1/2).



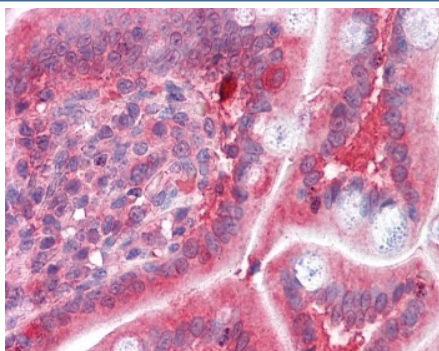
Sandwich ELISA using the COMT antibody at 0.5ug/ml as the detect.



IHC testing of FFPE human cerebellum with COMT antibody at 4ug/ml. HIER: steamed with pH9 Tris/EDTA, HRP-staining.



IHC testing of FFPE human testis tissue with COMT antibody at 3.75ug/ml. Required HIER: steamed antigen retrieval with pH6 citrate buffer; AP-staining.



IHC testing of FFPE human small intestine tissue with COMT antibody at 3.75ug/ml. Required HIER: steamed antigen retrieval with pH6 citrate buffer; AP-staining.

## Description

Additional name(s) for this target protein: Catechol-O-methyltransferase

## Application Notes

Optimal dilution of the COMT antibody should be determined by the researcher.

## Immunogen

Amino acids QDIIPQLKKKYDVD were used as the immunogen for this COMT antibody.

## **Storage**

Aliquot and store the COMT antibody at -20oC.

Ordering:Phone:858.663.9055 | Fax:1.267.821.0800 | Email:info@nsjbio.com

Copyright © NSJ Bioreagents. All rights reserved