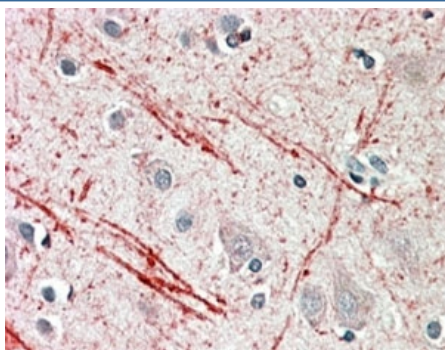


IGF2 Antibody (R34029)

Catalog No.	Formulation	Size
R34029-100UG	0.5 mg/ml in 1X TBS, pH7.3, with 0.5% BSA (US sourced) and 0.02% sodium azide	100 ug

[Bulk quote request](#)

Availability	1-3 business days
Species Reactivity	Human
Predicted Reactivity	Cow, Dog, Mouse, Pig, Rat
Format	Antigen affinity purified
Clonality	Polyclonal (goat origin)
Isotype	Goat Ig
Purity	Antigen affinity
Gene ID	3481
Applications	Immunohistochemistry (FFPE) : 5-10ug/ml ELISA (peptide) LOD : 1:64000
Limitations	This IGF2 antibody is available for research use only.



IHC testing of FFPE human cerebellum with IGF2 antibody at 5ug/ml. HIER: steamed with pH6 citrate buffer, AP-staining.

Description

Additional name(s) for this target protein: Insulin-like growth factor 2

Application Notes

Optimal dilution of the IGF2 antibody should be determined by the researcher.

Immunogen

Amino acids ETYCATPAKSERD were used as the immunogen for this IGF2 antibody.

Storage

Aliquot and store the IGF2 antibody at -20oC.