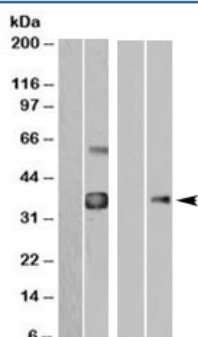


WISP1 Antibody (R34009)

| Catalog No. | Formulation | Size |
|--------------|---|--------|
| R34009-100UG | 0.5 mg/ml in 1X TBS, pH7.3, with 0.5% BSA (US sourced) and 0.02% sodium azide | 100 ug |

[Bulk quote request](#)

| | |
|----------------------|---|
| Availability | 1-3 business days |
| Species Reactivity | Human |
| Predicted Reactivity | Mouse, Rat |
| Format | Antigen affinity purified |
| Clonality | Polyclonal (goat origin) |
| Isotype | Goat Ig |
| Purity | Antigen affinity |
| Gene ID | 8840 |
| Applications | Western blot : 1-3ug/ml ELISA (peptide) LOD : 1:128000 |
| Limitations | This WISP1 antibody is available for research use only. |



Western blot of HEK293 overexpressing WISP1-FLAG probed with anti-FLAG in the left panel and with WISP1 antibody in the right panel (mock transfection in first lane of each panel).

Description

Additional name(s) for this target protein: WNT1 inducible signaling pathway protein 1

Application Notes

Optimal dilution of the WISP1 antibody should be determined by the researcher.

Immunogen

Amino acids ESYPDFSEIAN were used as the immunogen for this WISP1 antibody.

Storage

Aliquot and store the WISP1 antibody at -20oC.