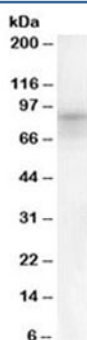


## DPP10 Antibody (R33415)

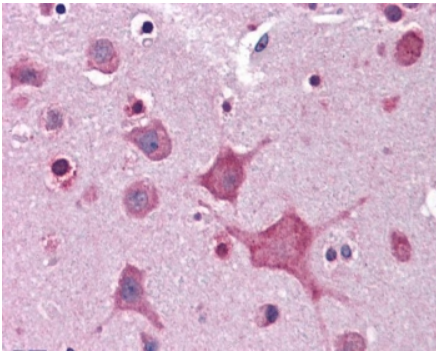
| Catalog No.  | Formulation   | Size   |
|--------------|---|--------|
| R33415-100UG | 0.5 mg/ml in 1X TBS, pH7.3, with 0.5% BSA (US sourced) and 0.02% sodium azide | 100 ug |

[Bulk quote request](#)

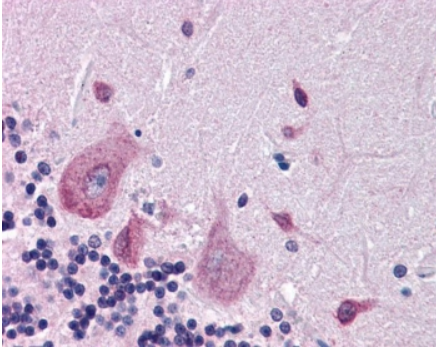
|                      |  |
|----------------------|--|
| Availability         | 1-3 business days  |
| Species Reactivity   | Human  |
| Predicted Reactivity | Dog, Cow   |
| Format               | Antigen affinity purified  |
| Clonality            | Polyclonal (goat origin)   |
| Isotype              | Goat Ig  |
| Purity               | Antigen affinity   |
| Gene ID              | 57628  |
| Applications         | Western blot : 0.1-0.3ug/ml<br>IHC (FFPE) : 3.75ug/ml<br>ELISA (peptide) LOD : 1:32000 |
| Limitations          | This DPP10 antibody is available for research use only.                                |



Western blot testing of human bone marrow lysate with DPP10 antibody at 0.1ug/ml.  
Predicted molecular weight: ~90 kDa.



IHC testing of FFPE human cortex (brain) tissue with DPP10 antibody at 3.75ug/ml. Required HIER: steamed antigen retrieval with pH6 citrate buffer; AP-staining.



IHC testing of FFPE human cerebellum tissue with DPP10 antibody at 3.75ug/ml. Required HIER: steamed antigen retrieval with pH6 citrate buffer; AP-staining.

## Description

Additional name(s) for this target protein: Dipeptidylpeptidase 10

## Application Notes

Optimal dilution of the DPP10 antibody should be determined by the researcher.

## Immunogen

Amino acids DEGHNVSEKSKYHL were used as the immunogen for this DPP10 antibody.

## Storage

Aliquot and store the DPP10 antibody at -20oC.