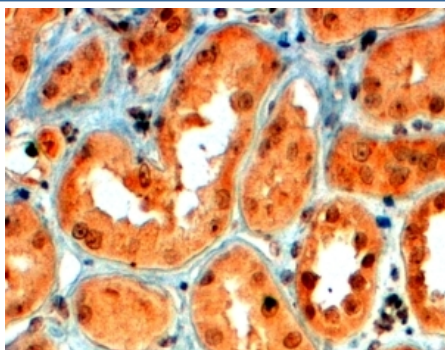


## Semaphorin 5A Antibody (R33409)

Catalog No.	Formulation	Size
R33409-100UG	0.5 mg/ml in 1X TBS, pH7.3, with 0.5% BSA (US sourced) and 0.02% sodium azide	100 ug

[Bulk quote request](#)

Availability	1-3 business days
Species Reactivity	Human
Predicted Reactivity	Cow, Dog, Mouse, Rat
Format	Antigen affinity purified
Clonality	Polyclonal (goat origin)
Isotype	Goat Ig
Purity	Antigen affinity
Gene ID	9037
Applications	Immunohistochemistry (FFPE) : 4-6ug/ml ELISA (peptide) LOD : 1:128000
Limitations	This Semaphorin 5A antibody is available for research use only.



IHC testing of FFPE human kidney with Semaphorin 5A antibody at 4ug/ml. HIER: steamed with pH6 citrate buffer, HRP-staining.

## Description

Additional name(s) for this target protein: SEMA5A

## Application Notes

Optimal dilution of the Semaphorin 5A antibody should be determined by the researcher.

## Immunogen

Amino acids DEATKKACYSKGKS were used as the immunogen for this Semaphorin 5A antibody. The amino acid sequence used as immunogen is from the extracellular portion of the protein.

## Storage

Aliquot and store the Semaphorin 5A antibody at -20oC.