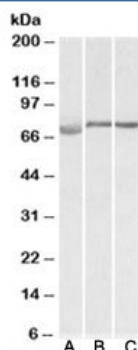


## DMTF1 Antibody (R33379)

Catalog No.	Formulation	Size
R33379-100UG	0.5 mg/ml in 1X TBS, pH7.3, with 0.5% BSA (US sourced) and 0.02% sodium azide	100 ug

[Bulk quote request](#)

<b>Availability</b>	1-3 business days
<b>Species Reactivity</b>	Human, Mouse, Rat
<b>Predicted Reactivity</b>	Cow, Dog, Pig
<b>Format</b>	Antigen affinity purified
<b>Clonality</b>	Polyclonal (goat origin)
<b>Isotype</b>	Goat Ig
<b>Purity</b>	Antigen affinity
<b>Gene ID</b>	9988
<b>Applications</b>	Western blot : 1-3ug/ml ELISA (peptide) LOD : 1:8000
<b>Limitations</b>	This DMTF1 antibody is available for research use only.



Western blot testing of human [A], mouse [B] and rat [C] testis lysate with DMTF1 antibody at 1ug/ml. Predicted molecular weight: ~84/75kDa (isoforms a/b).

## Description

Additional name(s) for this target protein: Cyclin D binding myb-like transcription factor 1

## Application Notes

Optimal dilution of the DMTF1 antibody should be determined by the researcher.

## Immunogen

Amino acids DAHVSKFSDQNSTE were used as the immunogen for this DMTF1 antibody. This sequence is common to isoforms a and b.

## Storage

Aliquot and store the DMTF1 antibody at -20oC.