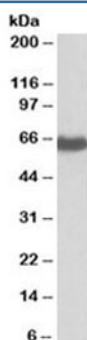


EHD2 Antibody (R33325)

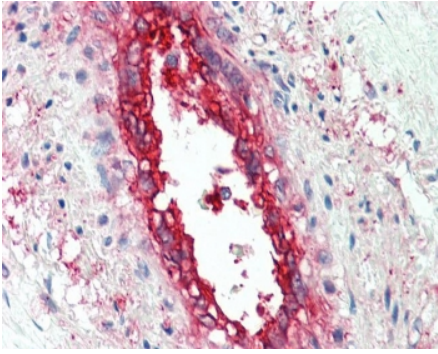
| Catalog No. | Formulation | Size |
|--------------|---|--------|
| R33325-100UG | 0.5 mg/ml in 1X TBS, pH7.3, with 0.5% BSA (US sourced) and 0.02% sodium azide | 100 ug |

[Bulk quote request](#)

| | |
|----------------------|---|
| Availability | 1-3 business days |
| Species Reactivity | Human |
| Predicted Reactivity | Mouse, Rat, Dog, Cow |
| Format | Antigen affinity purified |
| Clonality | Polyclonal (goat origin) |
| Isotype | Goat Ig |
| Purity | Antigen affinity |
| Gene ID | 30846 |
| Localization | Cytoplasmic, membrane |
| Applications | Western blot : 1-3ug/ml IHC (FFPE) : 5ug/ml ELISA (peptide) LOD : 1:64000 |
| Limitations | This EHD2 antibody is available for research use only. |



Western blot testing of human placenta lysate with EHD2 antibody at 0.1ug/ml. Predicted molecular weight: ~61 kDa.



IHC testing of FFPE human vessel with EHD2 antibody at ug/ml. HIER: steamed antigen retrieval with pH6 citrate buffer; AP-staining.

Description

Additional name(s) for this target protein: EH-domain containing 2

Immunogen

Amino acids CRLVPPSKRRHKGSA were used as the immunogen for this EHD2 antibody.

Storage

Aliquot and store the EHD2 antibody at -20oC.