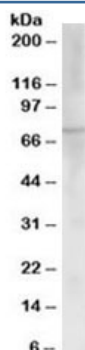


## ChAT Antibody (R33259)

Catalog No.	Formulation	Size
R33259-100UG	0.5 mg/ml in 1X TBS, pH7.3, with 0.5% BSA (US sourced) and 0.02% sodium azide	100 ug

[Bulk quote request](#)

Availability	1-3 business days
Species Reactivity	Human
Predicted Reactivity	Dog, Pig, Cow
Format	Antigen affinity purified
Clonality	Polyclonal (goat origin)
Isotype	Goat Ig
Purity	Antigen affinity
Gene ID	1103
Applications	Western blot : 0.03-0.3ug/ml ELISA (peptide) LOD : 1:32000
Limitations	This ChAT antibody is available for research use only.



Western blot testing of human placenta lysate with ChAT antibody at 0.03ug/ml. Predicted molecular weight ~74 kDa.

## Description

Additional name(s) for this target protein: Choline acetyltransferase

## Application Notes

Optimal dilution of the ChAT antibody should be determined by the researcher.

## Immunogen

Amino acids CKEKATRPSQGHQP were used as the immunogen for this ChAT antibody.

## Storage

Aliquot and store the ChAT antibody at -20oC.