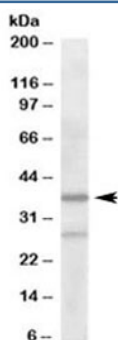


ARPC1B Antibody (R33197)

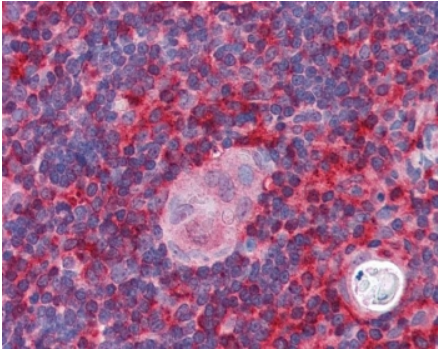
Catalog No.	Formulation	Size
R33197-100UG	0.5 mg/ml in 1X TBS, pH7.3, with 0.5% BSA (US sourced) and 0.02% sodium azide	100 ug

[Bulk quote request](#)

Availability	1-3 business days
Species Reactivity	Human
Predicted Reactivity	Mouse, Rat, Dog, Pig, Cow
Format	Antigen affinity purified
Clonality	Polyclonal (goat origin)
Isotype	Goat Ig
Purity	Antigen affinity
Gene ID	10095
Localization	Cytoplasmic
Applications	Western blot : 2-4ug/ml IHC (FFPE) : 5ug/ml ELISA (peptide) LOD : 1:32000
Limitations	This ARPC1B antibody is available for research use only.



Western blot testing of human liver lysate with ARPC1B antibody at 2ug/ml. Predicted molecular weight: ~41 kDa.



IHC testing of FFPE human thymus tissue with ARPC1B antibody at 5ug/ml. Required HIER: steamed antigen retrieval with pH6 citrate buffer; AP-staining.

Description

Additional name(s) for this target protein: Actin related protein 2/3 complex, subunit 1B

Application Notes

Optimal dilution of the ARPC1B antibody should be determined by the researcher.

Immunogen

Amino acids AYHSFLVEPISCH were used as the immunogen for this ARPC1B antibody.

Storage

Aliquot and store the ARPC1B antibody at -20oC.