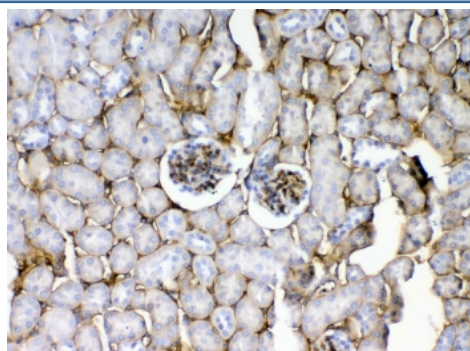


CD105 Antibody (R32935)

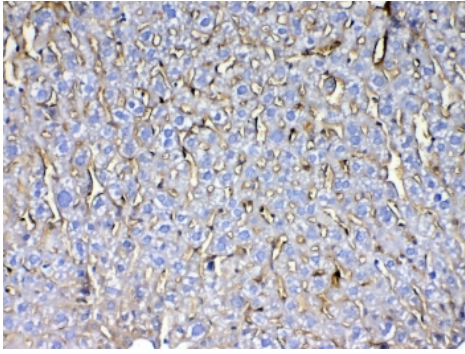
Catalog No.	Formulation	Size
R32935	0.5mg/ml if reconstituted with 0.2ml sterile DI water	100 ug

Bulk quote request

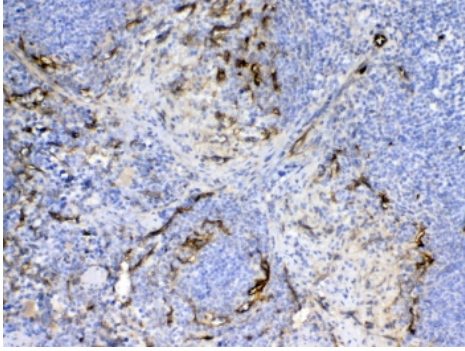
Availability	1-3 business days
Species Reactivity	Mouse, Rat
Format	Antigen affinity purified
Clonality	Polyclonal (rabbit origin)
Isotype	Rabbit IgG
Purity	Antigen affinity
Buffer	Lyophilized from 1X PBS with 2.5% BSA, 0.025% sodium azide
UniProt	Q63961
Localization	Cell surface, cytoplasmic
Applications	Western Blot : 0.5-1ug/ml IHC (FFPE) : 1-2ug/ml Direct ELISA (recombinant mouse protein) : 0.1-0.5ug/ml (BSA-free format available)
Limitations	This CD105 antibody is available for research use only.



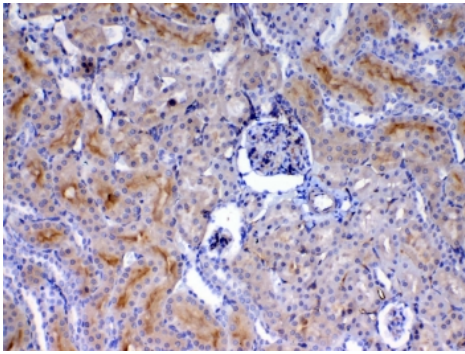
IHC testing of FFPE mouse kidney tissue with CD105 antibody at 1ug/ml. Required HIER: steam section in pH6 citrate buffer for 20 min and allow to cool prior to testing.



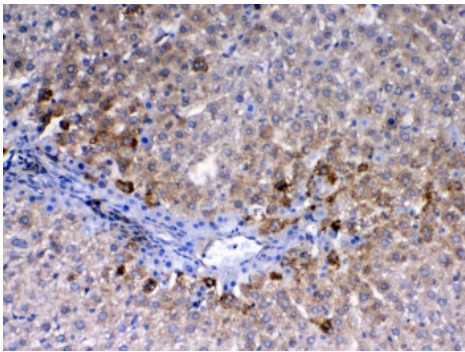
IHC testing of FFPE mouse liver tissue with CD105 antibody at 1ug/ml. Required HIER: steam section in pH6 citrate buffer for 20 min and allow to cool prior to testing.



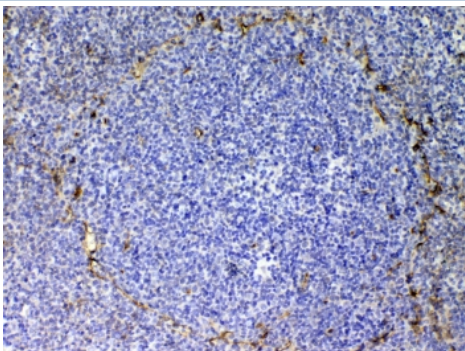
IHC testing of FFPE mouse spleen tissue with CD105 antibody at 1ug/ml. Required HIER: steam section in pH6 citrate buffer for 20 min and allow to cool prior to testing.



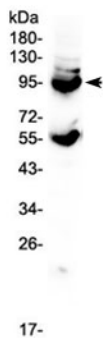
IHC testing of FFPE rat kidney tissue with CD105 antibody at 1ug/ml. Required HIER: steam section in pH6 citrate buffer for 20 min and allow to cool prior to testing.



IHC testing of FFPE rat liver tissue with CD105 antibody at 1ug/ml. Required HIER: steam section in pH6 citrate buffer for 20 min and allow to cool prior to testing.



IHC testing of FFPE rat spleen tissue with CD105 antibody at 1ug/ml. Required HIER: steam section in pH6 citrate buffer for 20 min and allow to cool prior to testing.



Western blot testing of mouse lung tissue lysate with CD105 antibody at 0.5ug/ml.
Expected molecular weight: 70/90 kDa (monomer, unmodified/glycosylated); 140-180 kDa (dimer, unmodified/glycosylated).

Description

Endoglin (Osler-Rendu-Weber syndrome 1), CD105, is a type I membrane glycoprotein located on cell surfaces and is a part of the TGF beta receptor complex. Its gene is mapped to human chromosome 8. The protein consists of a homodimer of 180 kDa with disulfide links. It has been found on endothelial cells, activated macrophages, fibroblasts and smooth muscle cells. Endoglin has a role in the development of the cardiovascular system and in vascular remodeling and has been found to be elevated in pregnant women who subsequently develop preeclampsia.

Application Notes

Optimal dilution of the CD105 antibody should be determined by the researcher.

Immunogen

A recombinant mouse protein corresponding to amino acids E27-L226 was used as the immunogen for the CD105 antibody.

Storage

After reconstitution, the CD105 antibody can be stored for up to one month at 4°C. For long-term, aliquot and store at -20°C. Avoid repeated freezing and thawing.