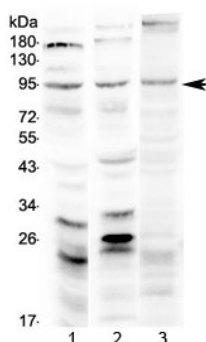


Semaphorin 3A Antibody (R32908)

Catalog No.	Formulation	Size
R32908	0.5mg/ml if reconstituted with 0.2ml sterile DI water	100 ug

[Bulk quote request](#)

Availability	1-3 business days
Species Reactivity	Human, Mouse, Rat
Format	Antigen affinity purified
Clonality	Polyclonal (rabbit origin)
Isotype	Rabbit IgG
Purity	Antigen affinity
Buffer	Lyophilized from 1X PBS with 2.5% BSA, 0.025% sodium azide
UniProt	Q14563
Applications	Western Blot : 0.5-1ug/ml Direct ELISA (recombinant human protein) : 0.1-0.5ug/ml (BSA-free format available)
Limitations	This Semaphorin 3A antibody is available for research use only.



Western blot testing of 1) rat brain, 2) mouse brain and 3) human U-87MG lysate with Semaphorin 3A antibody at 0.5ug/ml. Predicted molecular weight ~89 kDa.

Description

SEMA3A is also known as COLL1, SEMA1 or SEMAL. This gene is a member of the semaphorin family and encodes a protein with an Ig-like C2-type (immunoglobulin-like) domain, a PSI domain and a Sema domain. This secreted protein can function as either a chemorepulsive agent, inhibiting axonal outgrowth, or as a chemoattractive agent, stimulating the growth

of apical dendrites. In both cases, the protein is vital for normal neuronal pattern development. Increased expression of this protein is associated with schizophrenia and is seen in a variety of human tumor cell lines. Also, aberrant release of this protein is associated with the progression of Alzheimer's disease.

Application Notes

Optimal dilution of the Semaphorin 3A antibody should be determined by the researcher.

Immunogen

A recombinant human protein corresponding to amino acids N21-D223 was used as the immunogen for the Semaphorin 3A antibody.

Storage

After reconstitution, the Semaphorin 3A antibody can be stored for up to one month at 4°C. For long-term, aliquot and store at -20°C. Avoid repeated freezing and thawing.