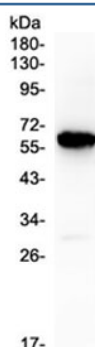


CD138 Antibody / Syndecan-1 (R32878)

Catalog No.	Formulation	Size
R32878	0.5mg/ml if reconstituted with 0.2ml sterile DI water	100 ug

[Bulk quote request](#)

Availability	1-3 business days
Species Reactivity	Human
Format	Antigen affinity purified
Clonality	Polyclonal (rabbit origin)
Isotype	Rabbit IgG
Purity	Antigen affinity
Buffer	Lyophilized from 1X PBS with 2.5% BSA, 0.025% sodium azide
UniProt	P18827
Applications	Western Blot : 0.5-1ug/ml
Limitations	This CD138 antibody is available for research use only.



Western blot testing of human placenta lysate with CD138 antibody at 0.5ug/ml. Predicted molecular weight ~32 kDa but often observed higher due to glycosylation.

Description

Syndecan 1 / CD138 is a protein which in humans is encoded by the SDC1 gene. The protein encoded by this gene is a transmembrane (type I) heparan sulfate proteoglycan and is a member of the syndecan proteoglycan family. The syndecans mediate cell binding, cell signaling, and cytoskeletal organization and syndecan receptors are required for internalization of the HIV-1 tat protein. The SDC1 protein functions as an integral membrane protein and participates in cell proliferation, cell

migration and cell-matrix interactions via its receptor for extracellular matrix proteins. Altered Syndecan-1 / CD138 expression has been detected in several different tumor types. While several transcript variants may exist for this gene, the full-length natures of only two have been described to date. These two represent the major variants of this gene and encode the same protein.

Application Notes

Optimal dilution of the CD138 antibody should be determined by the researcher.

Immunogen

A recombinant human protein corresponding to amino acids Q23-G254 was used as the immunogen for the CD138 antibody.

Storage

After reconstitution, the CD138 antibody can be stored for up to one month at 4oC. For long-term, aliquot and store at -20oC. Avoid repeated freezing and thawing.