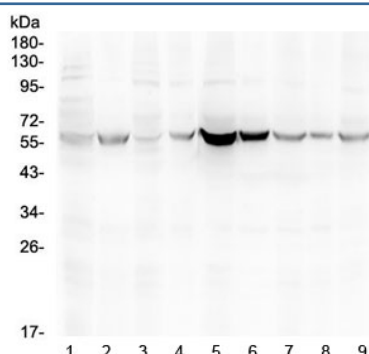


ESR2 Antibody / Estrogen Receptor beta (R32865)

Catalog No.	Formulation	Size
R32865	0.5mg/ml if reconstituted with 0.2ml sterile DI water	100 ug

Bulk quote request

Availability	1-3 business days
Species Reactivity	Human, Mouse, Rat
Format	Antigen affinity purified
Clonality	Polyclonal (rabbit origin)
Isotype	Rabbit IgG
Purity	Antigen affinity
Buffer	Lyophilized from 1X PBS with 2% Trehalose and 0.025% sodium azide
UniProt	Q92731
Localization	Predominantly nuclear
Applications	Western Blot : 0.5-1ug/ml
Limitations	This ESR2 antibody is available for research use only.



Western blot testing of 1) rat testis, 2) rat ovary, 3) mouse testis, 4) rat ovary, 5) human HeLa, 6) human MCF7, 7) human MDA-MB-231, 8) human MDA-MB-453 and 9) human SK-OV-3 lysate with ESR2 antibody at 0.5ug/ml. Predicted molecular weight: 53~59 kDa.

Description

Estrogen receptor-beta (ESR2) is a member of the superfamily of nuclear receptors, which can transduce extracellular signals into transcriptional responses. The gene product contains an N-terminal DNA binding domain and C-terminal ligand binding domain and is localized to the nucleus, cytoplasm, and mitochondria. Upon binding to 17beta-estradiol or related

ligands, the encoded protein forms homo- or hetero-dimers that interact with specific DNA sequences to activate transcription. Some isoforms dominantly inhibit the activity of other estrogen receptor family members. Several alternatively spliced transcript variants of this gene have been described, but the full-length nature of some of these variants has not been fully characterized.

Application Notes

Optimal dilution of the ESR2 antibody should be determined by the researcher.

Immunogen

A recombinant protein corresponding to amino acids F289-R501 was used as the immunogen for the ESR2 antibody.

Storage

After reconstitution, the ESR2 antibody can be stored for up to one month at 4oC. For long-term, aliquot and store at -20oC. Avoid repeated freezing and thawing.