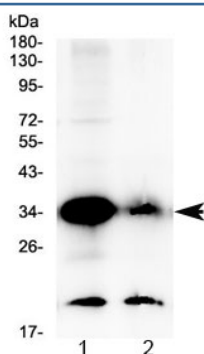


GDF15 Antibody (R32786)

Catalog No.	Formulation	Size
R32786	0.5mg/ml if reconstituted with 0.2ml sterile DI water	100 ug

[Bulk quote request](#)

Availability	1-3 business days
Species Reactivity	Human
Format	Antigen affinity purified
Clonality	Polyclonal (rabbit origin)
Isotype	Rabbit IgG
Purity	Antigen affinity
Buffer	Lyophilized from 1X PBS with 2.5% BSA, 0.025% sodium azide
UniProt	Q99988
Applications	Western Blot : 0.5-1ug/ml
Limitations	This GDF15 antibody is available for research use only.



Western blot testing of human 1) 22RV1 and 2) placenta lysate with GDF15 antibody at 0.5ug/ml. Predicted molecular weight ~34 kDa (pro-form) and ~25 kDa (mature form).

Description

Growth/differentiation factor 15 (GDF15) is a protein belonging to the transforming growth factor beta superfamily that has a role in regulating inflammatory and apoptotic pathways in injured tissues and during disease processes. GDF15 is also known as TGF-PL, MIC-1, PDF, PLAB, and PTGFB. GDF15 mRNA is most abundant in the liver, with lower levels seen in some other tissues. Its expression in liver can be significantly up-regulated in during injury of organs such as liver, kidney, heart and

lung.

Application Notes

Optimal dilution of the GDF15 antibody should be determined by the researcher.

Immunogen

Amino acids A195-I308 from the human protein were used as the immunogen for the GDF15 antibody.

Storage

After reconstitution, the GDF15 antibody can be stored for up to one month at 4oC. For long-term, aliquot and store at -20oC. Avoid repeated freezing and thawing.