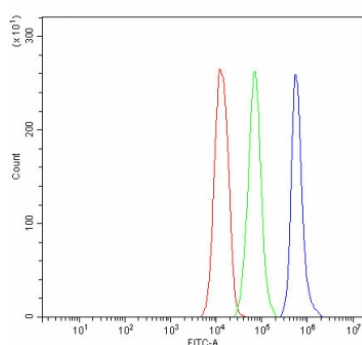


Bcl-XL Antibody (R32762)

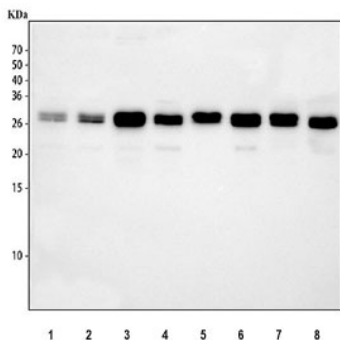
Catalog No.	Formulation	Size
R32762	0.5mg/ml if reconstituted with 0.2ml sterile DI water	100 ug

Bulk quote request

Availability	1-3 business days
Species Reactivity	Human, Mouse, Rat
Format	Antigen affinity purified
Clonality	Polyclonal (rabbit origin)
Isotype	Rabbit IgG
Purity	Antigen affinity
Buffer	Lyophilized from 1X PBS with 2% Trehalose
UniProt	Q07817
Localization	Cytoplasmic, membranous
Applications	Western blot : 0.5-1ug/ml Flow cytometry : 1-3ug/million cells
Limitations	This Bcl-XL antibody is available for research use only.



Flow cytometry testing of fixed and permeabilized human Jurkat cells with Bcl-XL antibody at 1ug/million cells (blocked with goat sera); Red=cells alone, Green=isotype control, Blue=Bcl-XL antibody.



Western blot testing of 1) human Jurkat, 2) human HeLa, 3) human A549, 4) human Raji, 5) rat brain, 6) rat C6, 7) mouse brain and 8) mouse NIH 3T3 cell lysate with Bcl-XL antibody at 0.5ug/ml. Expected molecular weight: 26-30 kDa.

Description

Bcl-2-like protein 1, also known as Bcl-XL, is a protein that in humans is encoded by the BCL2L1 gene. The protein encoded by this gene belongs to the BCL-2 protein family. BCL-2 family members form hetero- or homodimers and act as anti- or pro-apoptotic regulators that are involved in a wide variety of cellular activities. The proteins encoded by this gene are located at the outer mitochondrial membrane, and have been shown to regulate outer mitochondrial membrane channel (VDAC) opening. VDAC regulates mitochondrial membrane potential, and thus controls the production of reactive oxygen species and release of cytochrome C by mitochondria, both of which are the potent inducers of cell apoptosis. Alternative splicing results in multiple transcript variants encoding two different isoforms. The longer isoform (Bcl-xL) acts as an apoptotic inhibitor and the shorter form (Bcl-xS) acts as an apoptotic activator.

Application Notes

Optimal dilution of the Bcl-XL antibody should be determined by the researcher.

Immunogen

Amino acids M1-T219 from the human protein were used as the immunogen for the Bcl-XL antibody.

Storage

After reconstitution, the Bcl-XL antibody can be stored for up to one month at 4oC. For long-term, aliquot and store at -20oC. Avoid repeated freezing and thawing.