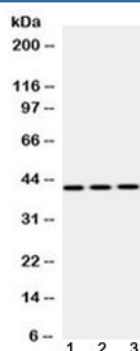


## EBP1 Antibody / ErbB3-binding protein 1 / PA2G4 (R32616)

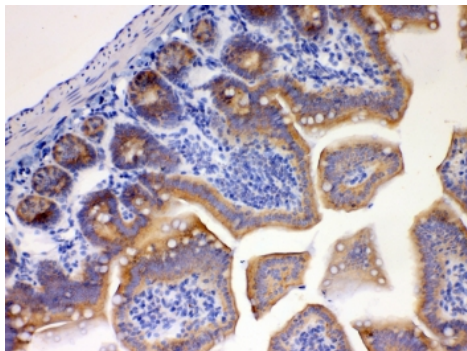
Catalog No.	Formulation	Size
R32616	0.5mg/ml if reconstituted with 0.2ml sterile DI water	100 ug

**Bulk quote request**

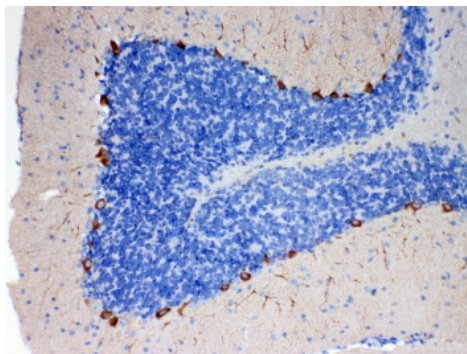
<b>Availability</b>	1-3 business days
<b>Species Reactivity</b>	Human, Mouse, Rat
<b>Format</b>	Antigen affinity purified
<b>Clonality</b>	Polyclonal (rabbit origin)
<b>Isotype</b>	Rabbit IgG
<b>Purity</b>	Antigen affinity
<b>Buffer</b>	Lyophilized from 1X PBS with 2.5% BSA and 0.025% sodium azide
<b>UniProt</b>	Q9UQ80
<b>Applications</b>	Western blot : 0.5-1ug/ml Immunohistochemistry (FFPE) : 1-2ug/ml
<b>Limitations</b>	This EBP1 antibody is available for research use only.



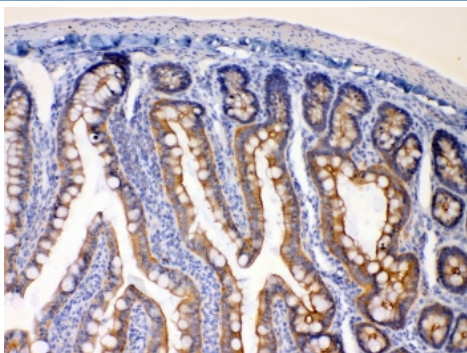
Western blot testing of 1) rat liver, 2) mouse NIH3T3 and 3) human HepG2 lysate with EBP1 antibody at 0.5ug/ml. Observed molecular weight 42 kDa (p42 isoform) and 48 kDa (p48 isoform).



IHC testing of FFPE mouse intestine tissue with EBP1 antibody at 1ug/ml. HIER: steam section in pH6 citrate buffer for 20 min.



IHC testing of FFPE mouse brain tissue with EBP1 antibody at 1ug/ml. HIER: steam section in pH6 citrate buffer for 20 min.



IHC testing of FFPE rat intestine tissue with EBP1 antibody at 1ug/ml. HIER: steam section in pH6 citrate buffer for 20 min.

## Description

Proliferation-associated protein 2G4 (PA2G4), also known as ErbB3-binding protein 1 (EBP1), is a protein that in humans is encoded by the PA2G4 gene. This gene encodes an RNA-binding protein that is involved in growth regulation. This protein is present in pre-ribosomal ribonucleoprotein complexes and may be involved in ribosome assembly and the regulation of intermediate and late steps of rRNA processing. This protein can interact with the cytoplasmic domain of the ErbB3 receptor and may contribute to transducing growth regulatory signals. This protein is also a transcriptional corepressor of androgen receptor-regulated genes and other cell cycle regulatory genes through its interactions with histone deacetylases.

## Application Notes

Optimal dilution of the EBP1 antibody should be determined by the researcher.

## Immunogen

Amino acids 138-178 (RKADVIAAHLCAEAALRLVKPGNQNTQVTEAWNKVAHSFN-human) were used as the immunogen for the EBP1 antibody.

## Storage

After reconstitution, the EBP1 antibody can be stored for up to one month at 4°C. For long-term, aliquot and store at -20°C. Avoid repeated freezing and thawing.

Ordering: Phone: 858.663.9055 | Fax: 1.267.821.0800 | Email: [info@nsjbio.com](mailto:info@nsjbio.com)

Copyright © NSJ Bioreagents. All rights reserved