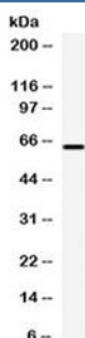


## Carboxypeptidase M Antibody / CPM (R32609)

Catalog No.	Formulation	Size
R32609	0.5mg/ml if reconstituted with 0.2ml sterile DI water	100 ug

[Bulk quote request](#)

Availability	1-3 business days
Species Reactivity	Human
Format	Antigen affinity purified
Clonality	Polyclonal (rabbit origin)
Isotype	Rabbit IgG
Purity	Antigen affinity
Buffer	Lyophilized from 1X PBS with 2.5% BSA and 0.025% sodium azide
UniProt	P14384
Applications	Western blot : 0.1-0.5ug/ml
Limitations	This Carboxypeptidase M antibody is available for research use only.



Western blot testing of human HepG2 cell lysate with Carboxypeptidase M antibody at 0.5ug/ml. Expected molecular weight: 51-65 kDa depending on glycosylation level.

## Description

CPM, mapped to 12q15, is known as Carboxypeptidase M. The protein encoded by this gene is a membrane-bound arginine/lysine carboxypeptidase. Its expression is associated with monocyte to macrophage differentiation. This encoded protein contains hydrophobic regions at the amino and carboxy termini and has 6 potential asparagine-linked glycosylation sites. The active site residues of carboxypeptidases A and B are conserved in this protein. Three alternatively spliced

transcript variants encoding the same protein have been described for this gene.

## Application Notes

Optimal dilution of the Carboxypeptidase M antibody should be determined by the researcher.

## Immunogen

Amino acids 286-316 (KYPREEKLPSFWNNNKASLIEYIKQVHLGVK-human) were used as the immunogen for the Carboxypeptidase M antibody.

## Storage

After reconstitution, the Carboxypeptidase M antibody can be stored for up to one month at 4oC. For long-term, aliquot and store at -20oC. Avoid repeated freezing and thawing.