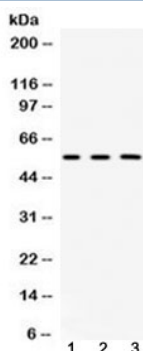


## Fibrinogen beta chain Antibody (R32603)

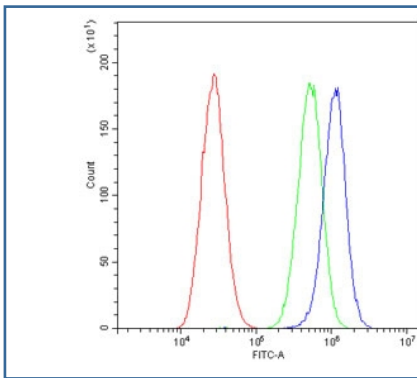
Catalog No.	Formulation	Size
R32603	0.5mg/ml if reconstituted with 0.2ml sterile DI water	100 ug

[Bulk quote request](#)

<b>Availability</b>	1-3 business days
<b>Species Reactivity</b>	Human, Mouse, Rat
<b>Format</b>	Antigen affinity purified
<b>Clonality</b>	Polyclonal (rabbit origin)
<b>Isotype</b>	Rabbit IgG
<b>Purity</b>	Antigen affinity
<b>Buffer</b>	Lyophilized from 1X PBS with 2.5% BSA and 0.025% sodium azide
<b>UniProt</b>	P02675
<b>Applications</b>	Western blot : 0.5-1ug/ml Flow cytometry : 1-3ug/10 <sup>6</sup> cells
<b>Limitations</b>	This Fibrinogen beta chain antibody is available for research use only.



Western blot testing of 1) rat kidney, 2) mouse liver and 3) human HeLa lysate with Fibrinogen beta chain antibody at 0.5ug/ml. Predicted molecular weight ~56 kDa.



Flow cytometry testing of human A549 cells with Fibrinogen beta chain antibody at 1ug/10<sup>6</sup> cells (blocked with goat sera); Red=cells alone, Green=isotype control, Blue=Fibrinogen beta chain antibody.

## Description

Fibrinogen beta chain, mapped to 4q31.3, is also known as FGB. The protein encoded by this gene is the beta component of fibrinogen, a blood-borne glycoprotein comprised of three pairs of nonidentical polypeptide chains. Following vascular injury, fibrinogen is cleaved by thrombin to form fibrin which is the most abundant component of blood clots. In addition, various cleavage products of fibrinogen and fibrin regulate cell adhesion and spreading, display vasoconstrictor and chemotactic activities, and are mitogens for several cell types. Mutations in this gene lead to several disorders, including afibrinogenemia, dysfibrinogenemia, hypodysfibrinogenemia and thrombotic tendency. Alternatively spliced transcript variants encoding different isoforms have been found for this gene.

## Application Notes

Optimal dilution of the Fibrinogen beta chain antibody should be determined by the researcher.

## Immunogen

Amino acids 193-225 (TNLRVLR SILENLR SKIQKLESDVSAQMEYCRT-human) were used as the immunogen for the Fibrinogen beta chain antibody.

## Storage

After reconstitution, the Fibrinogen beta chain antibody can be stored for up to one month at 4oC. For long-term, aliquot and store at -20oC. Avoid repeated freezing and thawing.