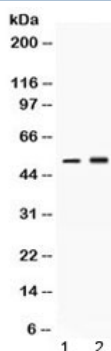


## AAT Antibody / Alpha 1 Antitrypsin (R32565)

Catalog No.	Formulation	Size
R32565	0.5mg/ml if reconstituted with 0.2ml sterile DI water	100 ug

[Bulk quote request](#)

<b>Availability</b>	1-3 business days
<b>Species Reactivity</b>	Human, Rat
<b>Format</b>	Antigen affinity purified
<b>Clonality</b>	Polyclonal (rabbit origin)
<b>Isotype</b>	Rabbit IgG
<b>Purity</b>	Antigen affinity
<b>Buffer</b>	Lyophilized from 1X PBS with 2.5% BSA and 0.025% sodium azide
<b>UniProt</b>	P01009
<b>Applications</b>	Western blot : 0.5-1ug/ml
<b>Limitations</b>	This AAT antibody is available for research use only.



Western blot testing of 1) rat brain and 2) human HeLa lysate with AAT antibody at 0.5ug/ml. Expected molecular weight: ~47 kDa (unmodified), 52 kDa (glycosylated).

## Description

SERPINA1 is also known as PI, A1A or AAT. This gene is mapped to 14q32.1. The protein encoded by this gene is secreted and is a serine protease inhibitor whose targets include elastase, plasmin, thrombin, trypsin, chymotrypsin, and plasminogen activator. Defects in this gene can cause emphysema or liver disease. Several transcript variants encoding the same protein have been found for this gene.

## Application Notes

Differences in protocols and secondary/substrate sensitivity may require the AAT antibody to be titrated for optimal performance.

## Immunogen

Amino acids E25-T204 from the human protein were used as the immunogen for the AAT antibody.

## Storage

After reconstitution, the AAT antibody can be stored for up to one month at 4°C. For long-term, aliquot and store at -20°C. Avoid repeated freezing and thawing.