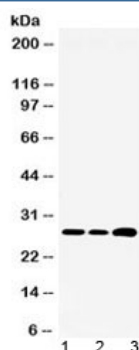


## RPL19 Antibody / Ribosomal protein L19 (R32560)

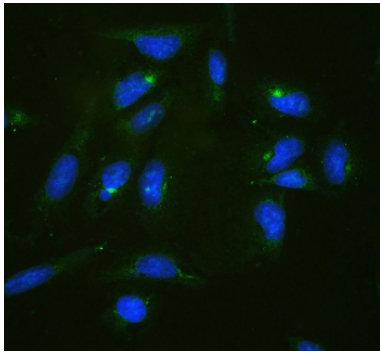
| Catalog No. | Formulation   | Size   |
|-------------|---|--------|
| R32560      | 0.5mg/ml if reconstituted with 0.2ml sterile DI water | 100 ug |

**Bulk quote request**

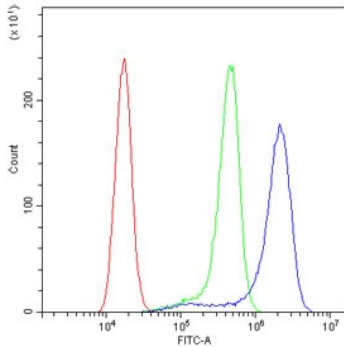
|                           |  |
|---------------------------|--|
| <b>Availability</b>       | 1-3 business days  |
| <b>Species Reactivity</b> | Human, Mouse, Rat  |
| <b>Format</b>             | Antigen affinity purified  |
| <b>Clonality</b>          | Polyclonal (rabbit origin)   |
| <b>Isotype</b>            | Rabbit IgG   |
| <b>Purity</b>             | Antigen affinity   |
| <b>Buffer</b>             | Lyophilized from 1X PBS with 2.5% BSA and 0.025% sodium azide  |
| <b>UniProt</b>            | P84098   |
| <b>Applications</b>       | Western blot : 0.5-1ug/ml<br>Immunofluorescence/Immunocytochemistry : 2-4ug/ml<br>Flow cytometry : 1-3ug/10 <sup>6</sup> cells |
| <b>Limitations</b>        | This RPL19 antibody is available for research use only.  |



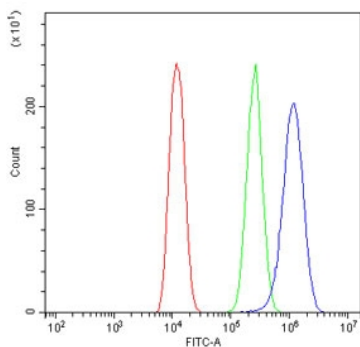
Western blot testing of 1) rat liver, 2) mouse HEPA and 3) human HepG2 lysate with RPL19 antibody at 0.5ug/ml. Expected molecular weight: 23-28 kDa.



IF/ICC staining of FFPE human U-2 OS cells with RPL19 antibody (green) at 2ug/ml and DAPI nuclear stain (blue). HIER: steam section in pH6 citrate buffer for 20 min.



Flow cytometry testing of human A431 cells with RPL19 antibody at 1ug/10<sup>6</sup> cells (blocked with goat sera); Red=cells alone, Green=isotype control, Blue= RPL19 antibody.



Flow cytometry testing of human U-2 OS cells with RPL19 antibody at 1ug/10<sup>6</sup> cells (blocked with goat sera); Red=cells alone, Green=isotype control, Blue= RPL19 antibody.

## Description

60S ribosomal protein L19 is a protein that in humans is encoded by the RPL19 gene. Ribosomes, the organelles that catalyze protein synthesis, consist of a small 40S subunit and a large 60S subunit. Together these subunits are composed of 4 RNA species and approximately 80 structurally distinct proteins. This gene encodes a ribosomal protein that is a component of the 60S subunit. The protein belongs to the L19E family of ribosomal proteins. It is located in the cytoplasm. As is typical for genes encoding ribosomal proteins, there are multiple processed pseudogenes of this gene dispersed through the genome.

## Application Notes

Differences in protocols and secondary/substrate sensitivity may require the RPL19 antibody to be titrated for optimal performance.

## Immunogen

Amino acids 132-170 (FKNKRILMEHIHKLKADKARKKLLADQAEARRSKTKEAR) from the human protein were used as the immunogen for the RPL19 antibody.

## Storage

After reconstitution, the RPL19 antibody can be stored for up to one month at 4oC. For long-term, aliquot and store at -20oC. Avoid repeated freezing and thawing.

Ordering:Phone:858.663.9055 | Fax:1.267.821.0800 | Email:[info@nsjbio.com](mailto:info@nsjbio.com)

Copyright © NSJ Bioreagents. All rights reserved