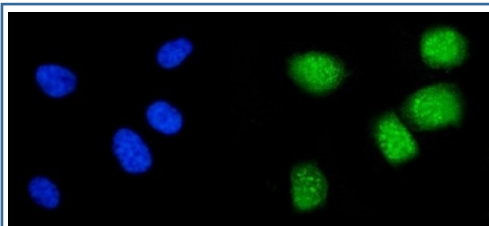


Cyclin A1 Antibody (R32168)

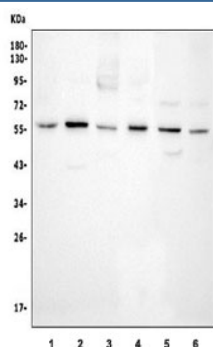
| Catalog No. | Formulation | Size |
|-------------|---|--------|
| R32168 | 0.5mg/ml if reconstituted with 0.2ml sterile DI water | 100 ug |

Bulk quote request

| | |
|---------------------------|---|
| Availability | 1-3 business days |
| Species Reactivity | Human |
| Format | Antigen affinity purified |
| Clonality | Polyclonal (rabbit origin) |
| Isotype | Rabbit IgG |
| Purity | Antigen affinity |
| Buffer | Lyophilized from 1X PBS with 2% Trehalose and 0.025% sodium azide |
| UniProt | P78396 |
| Applications | Western blot : 0.1-0.5ug/ml Immunofluorescence (FFPE) : 5ug/ml |
| Limitations | This Cyclin A1 antibody is available for research use only. |



Immunofluorescent staining of FFPE human PC-3 cells with Cyclin A1 antibody (green) and DAPI nuclear stain (blue). HIER: steam section in pH6 citrate buffer for 20 min.



Western blot testing of human 1) placenta, 2) U937, 3) PC3, 4) ThP-1, 5) MCF7 and 6) HeLa cell lysate with Cyclin A1 antibody. Predicted molecular weight 50-55 kDa.

Description

Cyclin-A1 is a protein that in humans is encoded by the CCNA1 gene. The protein encoded by this gene belongs to the highly conserved cyclin family, whose members are characterized by a dramatic periodicity in protein abundance through the cell cycle. Cyclins function as regulators of CDK kinases. Different cyclins exhibit distinct expression and degradation patterns which contribute to the temporal coordination of each mitotic event. The cyclin encoded by this gene was shown to be expressed in testis and brain, as well as in several leukemic cell lines, and is thought to primarily function in the control of the germline meiotic cell cycle. This cyclin binds both CDK2 and CDC2 kinases, which give two distinct kinase activities, one appearing in S phase, the other in G2, and thus regulate separate functions in cell cycle. Also this cyclin was found to bind to important cell cycle regulators, such as Rb family proteins, transcription factor E2F-1, and the p21 family proteins. Multiple transcript variants encoding different isoforms have been found for this gene.

Application Notes

Optimal dilution of the Cyclin A1 antibody should be determined by the researcher.

Immunogen

Amino acids 64-263 of human Cyclin A1 were used as the immunogen for the Cyclin A1 antibody.

Storage

After reconstitution, the Cyclin A1 antibody can be stored for up to one month at 4oC. For long-term, aliquot and store at -20oC. Avoid repeated freezing and thawing.