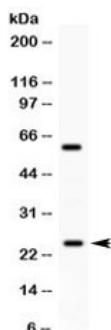


RAB11 Antibody (R32159)

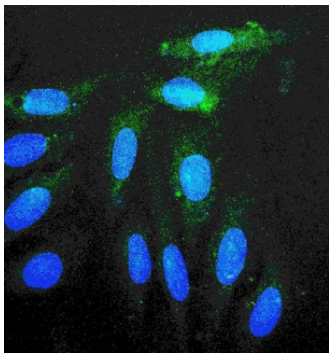
Catalog No.	Formulation	Size
R32159	0.5mg/ml if reconstituted with 0.2ml sterile DI water	100 ug

Bulk quote request

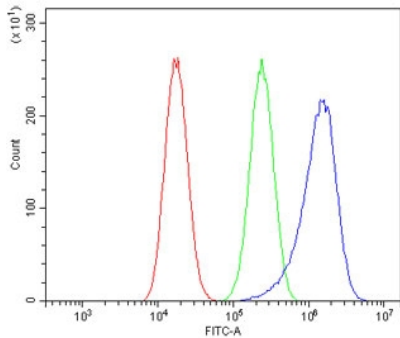
Availability	1-3 business days
Species Reactivity	Human
Format	Antigen affinity purified
Clonality	Polyclonal (rabbit origin)
Isotype	Rabbit IgG
Purity	Antigen affinity
Buffer	Lyophilized from 1X PBS with 2.5% BSA and 0.025% sodium azide
UniProt	P62491
Applications	Western blot : 0.1-0.5ug/ml Immunofluorescence/Immunocytochemistry : 2-4ug/ml Flow cytometry : 1-3ug/10 ⁶ cells
Limitations	This RAB11 antibody is available for research use only.



Western blot testing of human A549 cell lysate with RAB11 antibody. Expected molecular weight ~24 kDa.



IF/ICC staining of FFPE human A549 cells with RAB11 antibody (green) at 2ug/ml and DAPI nuclear stain (blue). HIER: steam section in pH6 citrate buffer for 20 min.



Flow cytometry testing of human A549 cells with RAB11 antibody at 1ug/10⁶ cells (blocked with goat sera); Red=cells alone, Green=isotype control, Blue= RAB11 antibody.

Description

Ras-related protein Rab-11A is a protein that in humans is encoded by the RAB11A gene. The protein encoded by this gene belongs to the small GTPase superfamily, Rab family which plays essential roles in vesicle and granule targeting. It is mapped to 15q22.31. RAB11A is associated with both constitutive and regulated secretory pathways, and may be involved in protein transport. Additionally, RAB11A can control intracellular trafficking of the innate immune receptor TLR4, and thereby also receptor signaling. It has been shown to interact with RAB11FIP2, RAB11FIP4, and RAB11FIP1 and so on.

Application Notes

Optimal dilution of the RAB11 antibody should be determined by the researcher.

Immunogen

Amino acids EIYRIVSQKQMSDRRENDMSPSNNVPIHVPPTTENKPKVQ of human RAB11A were used as the immunogen for the RAB11 antibody.

Storage

After reconstitution, the RAB11 antibody can be stored for up to one month at 4oC. For long-term, aliquot and store at -20oC. Avoid repeated freezing and thawing.