

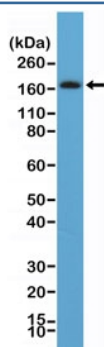
## Recombinant PDGFRB Antibody / C-Terminal [clone RM303] (R20325)

Catalog No.	Formulation	Size
R20325-0.1ML	Antibody in PBS with 50% glycerol, 1% BSA and 0.09% sodium azide	100 ul

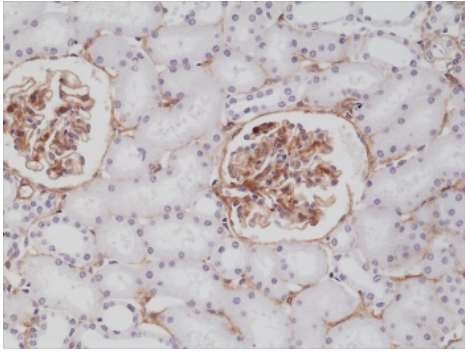
Recombinant **RABBIT MONOCLONAL**

[Bulk quote request](#)

<b>Availability</b>	1-3 business days
<b>Species Reactivity</b>	Human
<b>Format</b>	Purified
<b>Clonality</b>	Recombinant Rabbit Monoclonal
<b>Isotype</b>	Rabbit IgG
<b>Clone Name</b>	RM303
<b>Purity</b>	Protein A purified from animal origin-free supernatant
<b>UniProt</b>	P09619
<b>Localization</b>	Cell membrane, cytoplasm
<b>Applications</b>	Immunohistochemistry (FFPE) : 1:100-1:200 Western Blot : 1:100-1:200
<b>Limitations</b>	This recombinant PDGFRB antibody is available for research use only.



Western blot testing of human brain tissue lysate with recombinant PDGFRB antibody at 1:100. Expected molecular weight: 123-190 kDa depending on level of glycosylation.



IHC testing of formalin fixed and paraffin embedded human kidney tissue with recombinant PDGFRB antibody at 1:200 dilution. HIER: steam section in pH6 citrate buffer for 20 min and allow to cool prior to staining.

## Description

This antibody reacts to human CD140b (Platelet-derived growth factor receptor beta).

## Application Notes

The stated application concentrations are suggested starting points. Titration of the recombinant PDGFRB antibody may be required due to differences in protocols and secondary/substrate sensitivity.

## Immunogen

A peptide corresponding to the C-terminus of human CD140b/PDGFRB was used as the immunogen for the recombinant PDGFRB antibody.

## Storage

Store the recombinant PDGFRB antibody at -20oC.