

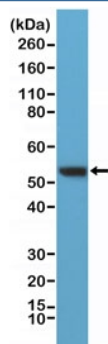
Recombinant Vimentin Antibody / C-Terminal [clone RM289] (R20315)

Catalog No.	Formulation	Size
R20315-0.1ML	Antibody in PBS with 50% glycerol, 1% BSA and 0.09% sodium azide	100 ul

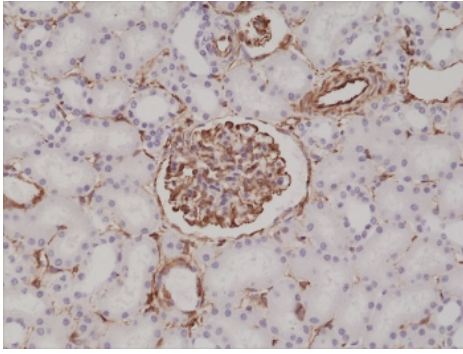
Recombinant **RABBIT MONOCLONAL**

[Bulk quote request](#)

Availability	1-3 business days
Species Reactivity	Human
Format	Purified
Clonality	Recombinant Rabbit Monoclonal
Isotype	Rabbit IgG
Clone Name	RM289
Purity	Protein A purified from animal origin-free supernatant
UniProt	P08670
Localization	Cytoplasmic, cell membrane
Applications	Immunohistochemistry (FFPE) : 1:100-1:200 Western Blot : 1:200-1:500
Limitations	This recombinant Vimentin antibody is available for research use only.



Western blot testing of human HeLa lysate with recombinant Vimentin antibody at 1:400 dilution. Predicted molecular weight ~53 kDa.



IHC testing of formalin fixed and paraffin embedded human kidney tissue with recombinant Vimentin antibody at 1:200 dilution. HIER: steam section in pH6 citrate buffer for 20 min and allow to cool prior to staining.

Description

This antibody reacts to human Vimentin. It may also react to mouse or rat Vimentin, as predicted by immunogen homology.

Application Notes

The stated application concentrations are suggested starting points. Titration of the recombinant Vimentin antibody may be required due to differences in protocols and secondary/substrate sensitivity.

Immunogen

A peptide corresponding to the C-terminus of human Vimentin was used as the immunogen for the recombinant Vimentin antibody.

Storage

Store the recombinant Vimentin antibody at -20oC.