

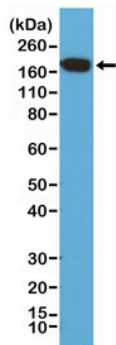
Recombinant EGFR Antibody / C-Terminal [clone RM294] (R20309)

Catalog No.	Formulation	Size
R20309-0.1ML	Antibody in PBS with 50% glycerol, 1% BSA and 0.09% sodium azide	100 ul

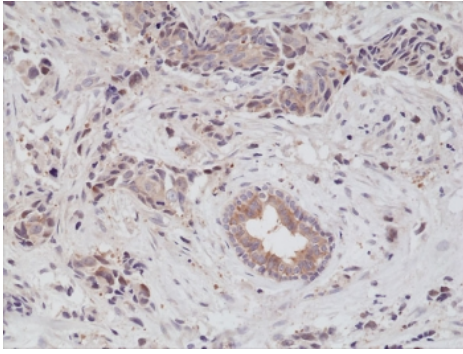
Recombinant **RABBIT MONOCLONAL**

[Bulk quote request](#)

Availability	1-3 business days
Species Reactivity	Human
Format	Purified
Clonality	Recombinant Rabbit Monoclonal
Isotype	Rabbit IgG
Clone Name	RM294
Purity	Protein A purified from animal origin-free supernatant
UniProt	P00533
Localization	Cell membrane, cytoplasm
Applications	Immunohistochemistry (FFPE) : 1:100-1:200 Western Blot : 1:200-1:500
Limitations	This recombinant EGFR antibody is available for research use only.



Western blot of human HeLa cell lysate using recombinant EGFR antibody at a 1:200 dilution. Expected molecular weight: 134-180 kDa depending on glycosylation level.



IHC staining of formalin fixed and paraffin embedded human breast cancer tissue using recombinant EGFR antibody at a 1:200 dilution. HIER: steam section in pH6 citrate buffer for 20 min and allow to cool prior to testing.

Description

This antibody reacts to human EGF Receptor (c-ErbB-1, HER1). No cross reactivity with HER2, HER3, or HER4 is seen.

Application Notes

The stated application concentrations are suggested starting points. Titration of the recombinant EGFR antibody may be required due to differences in protocols and secondary/substrate sensitivity.

Immunogen

A peptide corresponding to the C-terminus of human EGF Receptor was used as the immunogen for the recombinant EGFR antibody.

Storage

Store the recombinant EGFR antibody at -20oC.