

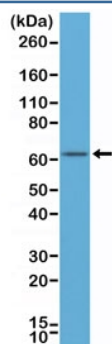
## Recombinant Estrogen Receptor alpha Antibody / N-Terminal Region [clone RM292] (R20308)

Catalog No.	Formulation	Size
R20308-0.1ML	Antibody in PBS with 50% glycerol, 1% BSA and 0.09% sodium azide	100 ul

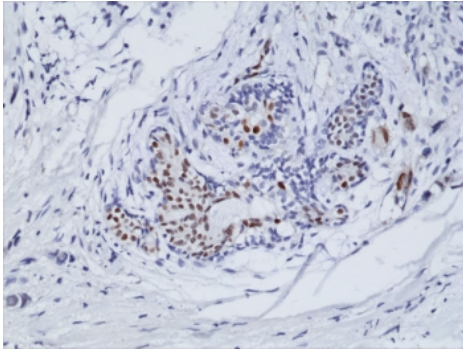
Recombinant **RABBIT MONOCLONAL**

[Bulk quote request](#)

Availability	1-3 business days
Species Reactivity	Human
Format	Purified
Clonality	Recombinant Rabbit Monoclonal
Isotype	Rabbit IgG
Clone Name	RM292
Purity	Protein A purified from animal origin-free supernatant
UniProt	P03372
Localization	Nuclear
Applications	Immunohistochemistry (FFPE) : 1:100-1:200 Western Blot : 1:200-1:500
Limitations	This recombinant Estrogen Receptor alpha antibody is available for research use only.



Western blot of human MCF-7 cell lysates using recombinant Estrogen Receptor alpha antibody at a 1:500 dilution. Predicted molecular weight ~66 kDa.



IHC staining of formalin fixed and paraffin embedded human breast cancer tissue using recombinant Estrogen Receptor alpha antibody at a 1:100 dilution. HIER: steam section in pH6 citrate buffer for 20 min and allow to cool prior to testing.

## Description

This antibody reacts to human ER alpha (Estrogen receptor alpha).

## Application Notes

The stated application concentrations are suggested starting points. Titration of the recombinant Estrogen Receptor alpha antibody may be required due to differences in protocols and secondary/substrate sensitivity.

## Immunogen

A peptide corresponding to residues near the N-terminus of human ER-alpha was used as the immunogen for the recombinant Estrogen Receptor alpha antibody.

## Storage

Store the recombinant Estrogen Receptor alpha antibody at -20oC.