

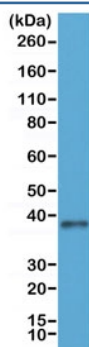
## Recombinant JAM-A Antibody / F11R [clone RM275] (R20292)

Catalog No.	Formulation	Size
R20292-0.1ML	Antibody in PBS with 50% glycerol, 1% BSA and 0.09% sodium azide	100 ul

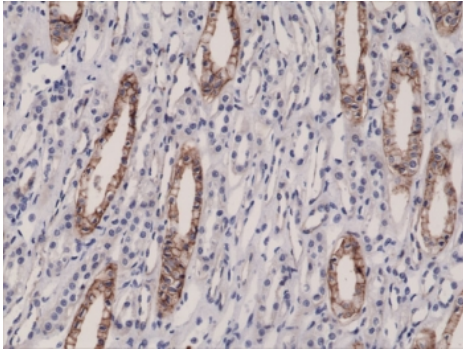
Recombinant **RABBIT MONOCLONAL**

[Bulk quote request](#)

Availability	1-3 business days
Species Reactivity	Human
Format	Purified
Clonality	Recombinant Rabbit Monoclonal
Isotype	Rabbit IgG
Clone Name	RM275
Purity	Protein A purified from animal origin-free supernatant
UniProt	Q9Y624
Gene ID	50848
Applications	Immunohistochemistry (FFPE) : 1:2000-1:10;000 (1) Western blot : 1:250-1:1000
Limitations	This recombinant JAM-A antibody is available for research use only.



Western blot of human 293 cell lysate using recombinant JAM-A antibody at 1:250.  
Observed molecular weight 35-43 kDa depending on glycosylation level.



IHC testing of FFPE human kidney tissue with recombinant JAM-A antibody at 1:10,000.

## Description

This recombinant JAM-A antibody reacts to human JAM1 (Junctional adhesion molecule 1).

## Immunogen

A peptide corresponding to the N-terminus of human JAM1 (Junctional adhesion molecule 1) was used as the immunogen for this recombinant JAM-A antibody.

## Storage

Store the recombinant JAM1 antibody at -20oC (with glycerol) or aliquot and store at -20oC (without glycerol).