

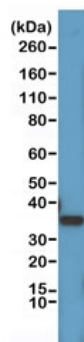
## Recombinant Cyclin D1 Antibody [clone RM241] (R20262)

Catalog No.	Formulation	Size
R20262-0.1ML	Antibody in PBS with 50% glycerol, 1% BSA and 0.09% sodium azide	100 ul

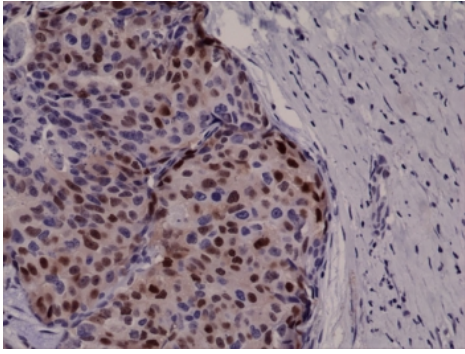
Recombinant **RABBIT MONOCLONAL**

[Bulk quote request](#)

Availability	1-3 business days
Species Reactivity	Human
Predicted Reactivity	Bovine, Mouse, Rat
Format	Purified
Clonality	Recombinant Rabbit Monoclonal
Isotype	Rabbit IgG
Clone Name	RM241
Purity	Protein A purified from animal origin-free supernatant
UniProt	P24385
Gene ID	595
Localization	Nuclear
Applications	Immunohistochemistry (FFPE) : 1:500-1:1000 (1) Western blot : 1:1000-1:2000
Limitations	This recombinant Cyclin D1 antibody is available for research use only.



Western blot testing of human HeLa cell lysate with recombinant Cyclin D1 antibody at 1:1000. Predicted molecular weight: 32-36 kDa.



IHC testing of FFPE human breast cancer tissue with recombinant Cyclin D1 antibody at 1:1000.

## Description

This recombinant Cyclin D1 antibody reacts to human Cyclin D1. It may also react to the bovine, mouse or rat protein, as predicted by immunogen homology.

## Immunogen

A peptide corresponding to Cyclin D1 was used as the immunogen for this recombinant Cyclin D1 antibody.

## Storage

Store the recombinant Cyclin D1 antibody at -20oC (with glycerol) or aliquot and store at -20oC (without glycerol).