

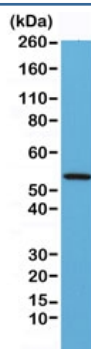
## Recombinant Desmin Antibody [clone RM234] (R20261)

Catalog No.	Formulation	Size
R20261-0.1ML	Antibody in PBS with 50% glycerol, 1% BSA and 0.09% sodium azide	100 ul

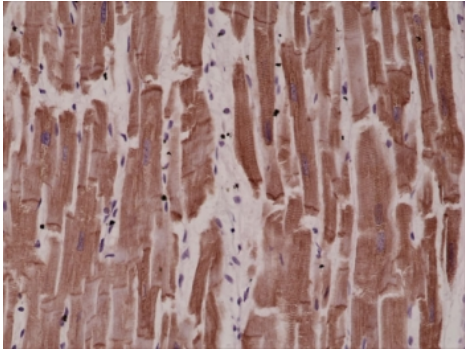
Recombinant **RABBIT MONOCLONAL**

[Bulk quote request](#)

Availability	1-3 business days
Species Reactivity	Human, Mouse
Predicted Reactivity	Bovine, Rat
Format	Purified
Clonality	Recombinant Rabbit Monoclonal
Isotype	Rabbit IgG
Clone Name	RM234
Purity	Protein A purified from animal origin-free supernatant
UniProt	P17661
Gene ID	1674
Localization	Cytoplasmic, membranous
Applications	Immunohistochemistry (FFPE) : 1:1000-1:4000 (1) Western blot : 1:1000-1:2000
Limitations	This recombinant Desmin antibody is available for research use only.



Western blot testing of mouse heart lysate with recombinant Desmin antibody at 1:1000.  
Predicted molecular weight ~54 kDa.



IHC testing of FFPE human heart tissue with recombinant Desmin antibody at 1:4000.

## Description

This recombinant Desmin antibody reacts to human and mouse Desmin. It may also react to the rat and bovine protein, as predicted by immunogen homology.

## Immunogen

A peptide corresponding to human Desmin was used as the immunogen for this recombinant Desmin antibody.

## Storage

Store the recombinant Desmin antibody at -20oC (with glycerol) or aliquot and store at -20oC (without glycerol).