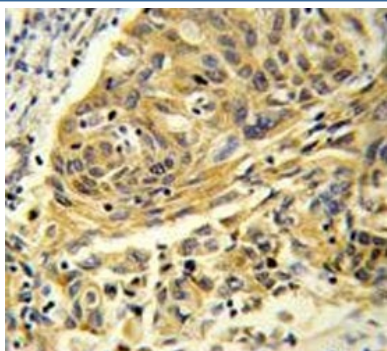


Clathrin Light Chain A Antibody / CTLA (F55014)

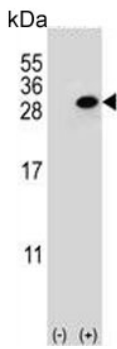
Catalog No.	Formulation	Size
F55014-0.4ML	In 1X PBS, pH 7.4, with 0.09% sodium azide	0.4 ml
F55014-0.08ML	In 1X PBS, pH 7.4, with 0.09% sodium azide	0.08 ml

[Bulk quote request](#)

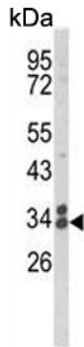
Availability	1-3 business days
Species Reactivity	Human
Format	Purified
Clonality	Polyclonal (rabbit origin)
Isotype	Rabbit Ig
Purity	Antigen affinity purified
UniProt	P09496
Localization	Cytoplasmic
Applications	Flow cytometry : 1:10-1:50 (1x10e6 cells) Western blot : 1:500-1:1000 Immunohistochemistry (FFPE) : 1:50-1:100
Limitations	This Clathrin Light Chain A antibody is available for research use only.



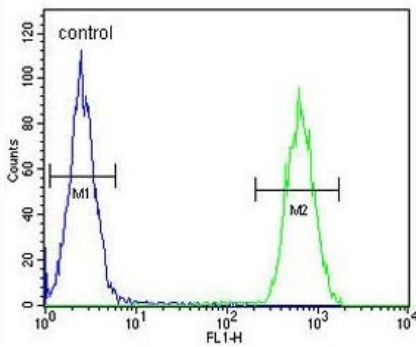
IHC testing of FFPE human lung carcinoma tissue with Clathrin Light Chain A antibody.
HIER: steam section in pH6 citrate buffer for 20 min and allow to cool prior to staining.



Western blot testing of 1) non-transfected and 2) transfected 293 cell lysate with Clathrin Light Chain A antibody.



Western blot testing of human MDA-MB-231 cell lysate with Clathrin Light Chain A antibody. Expected molecular weight: 24-27 kDa.



Flow cytometry testing of human MDA-MB-231 cells with Clathrin Light Chain A antibody; Blue=isotype control, Green= Clathrin Light Chain A antibody.

Description

Clathrin is a large, soluble protein composed of heavy and light chains. It functions as the main structural component of the lattice-type cytoplasmic face of coated pits and vesicles which entrap specific macromolecules during receptor-mediated endocytosis. CLTA is one of two clathrin light chain proteins which are believed to function as regulatory elements.

Application Notes

The stated application concentrations are suggested starting points. Titration of the Clathrin Light Chain A antibody may be required due to differences in protocols and secondary/substrate sensitivity.

Immunogen

A portion of amino acids 99-127 from the human protein was used as the immunogen for the Clathrin Light Chain A antibody.

Storage

Aliquot the Clathrin Light Chain A antibody and store frozen at -20°C or colder. Avoid repeated freeze-thaw cycles.

