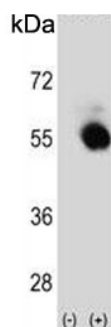


## SELENBP1 Antibody / Selenium Binding Protein / SBP (F55006)

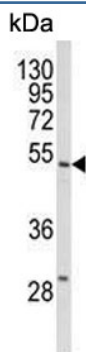
Catalog No.	Formulation	Size
F55006-0.4ML	In 1X PBS, pH 7.4, with 0.09% sodium azide	0.4 ml
F55006-0.08ML	In 1X PBS, pH 7.4, with 0.09% sodium azide	0.08 ml

[Bulk quote request](#)

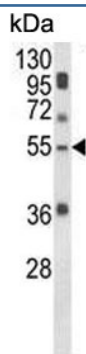
<b>Availability</b>	1-3 business days
<b>Species Reactivity</b>	Human, Mouse
<b>Format</b>	Purified
<b>Clonality</b>	Polyclonal (rabbit origin)
<b>Isotype</b>	Rabbit Ig
<b>Purity</b>	Antigen affinity purified
<b>UniProt</b>	Q13228
<b>Localization</b>	Cytoplasmic, nuclear
<b>Applications</b>	Western blot : 1:500-1:1000 Flow cytometry : 1:10-1:50 (1x10 <sup>6</sup> cells)
<b>Limitations</b>	This SELENBP1 antibody is available for research use only.



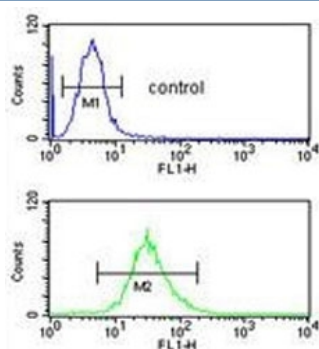
Western blot testing of 1) non-transfected and 2) transfected 293 cell lysate with SELENBP1 antibody.



Western blot testing of human HL60 cell lysate with SELENBP1 antibody. Predicted molecular weight ~52 kDa.



Western blot testing of mouse lung tissue lysate with SELENBP1 antibody. Predicted molecular weight ~52 kDa.



Flow cytometry testing of human HL60 cells with SELENBP1 antibody; Blue=isotype control, Green= SELENBP1 antibody.

## Description

SELENBP1 is the selenium-binding protein family. Selenium is an essential nutrient that exhibits potent anticarcinogenic properties, and deficiency of selenium may cause certain neurologic diseases. It has been proposed that the effects of selenium in preventing cancer and neurologic diseases may be mediated by selenium-binding proteins.

## Application Notes

The stated application concentrations are suggested starting points. Titration of the SELENBP1 antibody may be required due to differences in protocols and secondary/substrate sensitivity.

## Immunogen

A portion of amino acids 317-344 from the human protein was used as the immunogen for the SELENBP1 antibody.

## Storage

Aliquot the SELENBP1 antibody and store frozen at -20°C or colder. Avoid repeated freeze-thaw cycles.

